



WHYTE'S
SINCE 1783

CHRISTMAS AUCTION
ART & COLLECTIBLES

8 DECEMBER 2015



**CHRISTMAS AUCTION ART &
COLLECTIBLES**
8 DECEMBER 2015 at 6pm GMT

VIEWING

Friday 4 December 10am-5pm
Saturday 5 December 2pm-5pm
Monday & Tuesday 7 & 8 December 10am to 5pm

AUCTION

Tuesday 8 December at 6pm

BIDS:

This sale is exclusively internet & absentee bidding only.
You may bid live on the internet or
leave bids on-line (3% charge)
on www.whytes.ie or www.invaluable.com
or leave bids with Whyte's in person
or by email, telephone or post
01 676 2888 bids@whytes.ie

ENQUIRIES:

This catalogue:
Adelle Hughes ah@whytes.ie
Peter Whyte pw@whytes.ie

Accounts:

Sean Kelly ac@whytes.ie

Administration:

Samantha Wooley info@whytes.ie

Whyte & Sons Auctioneers Ltd
38 Molesworth Street
Dublin D02 KF80

IMPORTANT NOTES

ALL LOTS ARE SOLD SUBJECT TO OUR TERMS AND CONDITIONS OF SALE PRINTED ON PAGE 2

BUYERS' COMMISSION 20% (24.6% including VAT) is added to the hammer price of all lots. A further 3% (plus VAT) is charged by Invaluable to on-line bidders.

ROOM BIDDERS 1. Room bidders must register and obtain a bidding number on arrival. Proof of identity is required from clients new to us. 2. If successful in obtaining a lot please ensure you display your number clearly to the auctioneer and that it is your number that is called out. If there is any doubt about the hammer price or buyer, please draw this to the attention of the auctioneer immediately. 3. Payment may be made by cash, bank draft, cleared cheque, debit or credit card — we accept Mastercard or Visa (a charge of 2% is made on credit card transactions). There is no charge on debit card transactions.

LIVE INTERNET BIDDING You can bid "live" at this auction on our website. With live audio and visual broadcast you can see and hear the auctioneer and bid at the click of a mouse from the comfort of your home or office or wherever you can log on to the world wide web. You can even get an iPhone app to bid live at Whyte's from your mobile phone. Details from our website, www.whytes.ie The provider of our live bidding platform charges a fee of 3% of hammer price to purchasers.

ABSENTEE BIDDING 1. If you are unable to attend you may bid before the sale, using the form provided. Enter the maximum you are prepared to offer for each lot and the auctioneer will represent you as if you are personally attending the sale. Lots are knocked down at one step above the next highest bid, and not necessarily at your highest bid. Example: your bid is €1000 and next highest bid is €800 — the hammer price is €850. 2. **LIMIT BIDDING:** Absentee bidders may limit their total purchases to a set amount by entering their limit on the bidding form. This is especially useful for bidders wishing to cover as many lots as possible while setting a maximum amount to spend. 3. **"OR" BIDDING:** Absentee bidders who wish to bid on two or more lots, but only wish to purchase one, may do so by entering "OR" between the bids — the lots will be bid on in catalogue order. 4. **EQUAL BIDS:** In the event of equal bids being received for the same lot the first received will be given preference. If the instruction "break ties" is entered on the bid form the auctioneer will increase the bid by one step in the event of equal bids being received or in the event of a tie with a room bidder. 5. **"BUY" BIDS:** Unless otherwise instructed bids of "Buy" or "Buy at Best" shall be taken to indicate bids of up to three times the stated higher estimate in the catalogue. 6. **INVOICING AND PAYMENT:** Successful absentee bidders will be sent a *pro forma* invoice immediately after the sale with details of payment methods. All invoices must be paid within 7 days of the date of the sale or the lot(s) may be deemed in default and any subsequent losses incurred on resale become the responsibility of the bidder. *The Auctioneers and House Agents Act, under which we are licensed to hold public auctions, only allows for lots to be handed over to purchasers when paid for in full.*

CONDITION OF LOTS Note: Some lots in this sale are old artefacts and documents and vary greatly in condition. They are therefore offered with all faults and buyers are strongly recommended to satisfy themselves as to condition by inspecting them beforehand. Please see Terms and Conditions on page 7.

SHIPPING / POSTAGE We do not handle this ourselves but will recommend a suitable company who can collect your purchases on your behalf and pack and despatch them to you once they have been paid for.

PRICES REALISED A complete list of prices realised and unsold lots will be sent automatically to all absentee bidders and will be posted to our Internet website (www.whytes.ie) on the day after the sale.

FIREARMS Most firearms offered in this sale are either antiques or deactivated. Those that are not can only be delivered to persons with a valid firearms licence.

EXPORT LICENCES Purchasers from outside the State are reminded that export licences are required for all archaeological items, as well as artworks and documents that have been in the State for more than 25 years. Further details are available from the National Museum, The National Gallery of Ireland or the Department of The Arts, Heritage and the Gaeltacht. The onus on obtaining such licences is on the purchaser or the purchaser's shipper.



1

Norah McGuinness HRHA (1901-1980)

HAPPY CHRISTMAS, CARRIG BEG, 1956

hand-printed greeting card

dated on reverse

7¼ x 4¾in. (18.42 x 12.07cm)

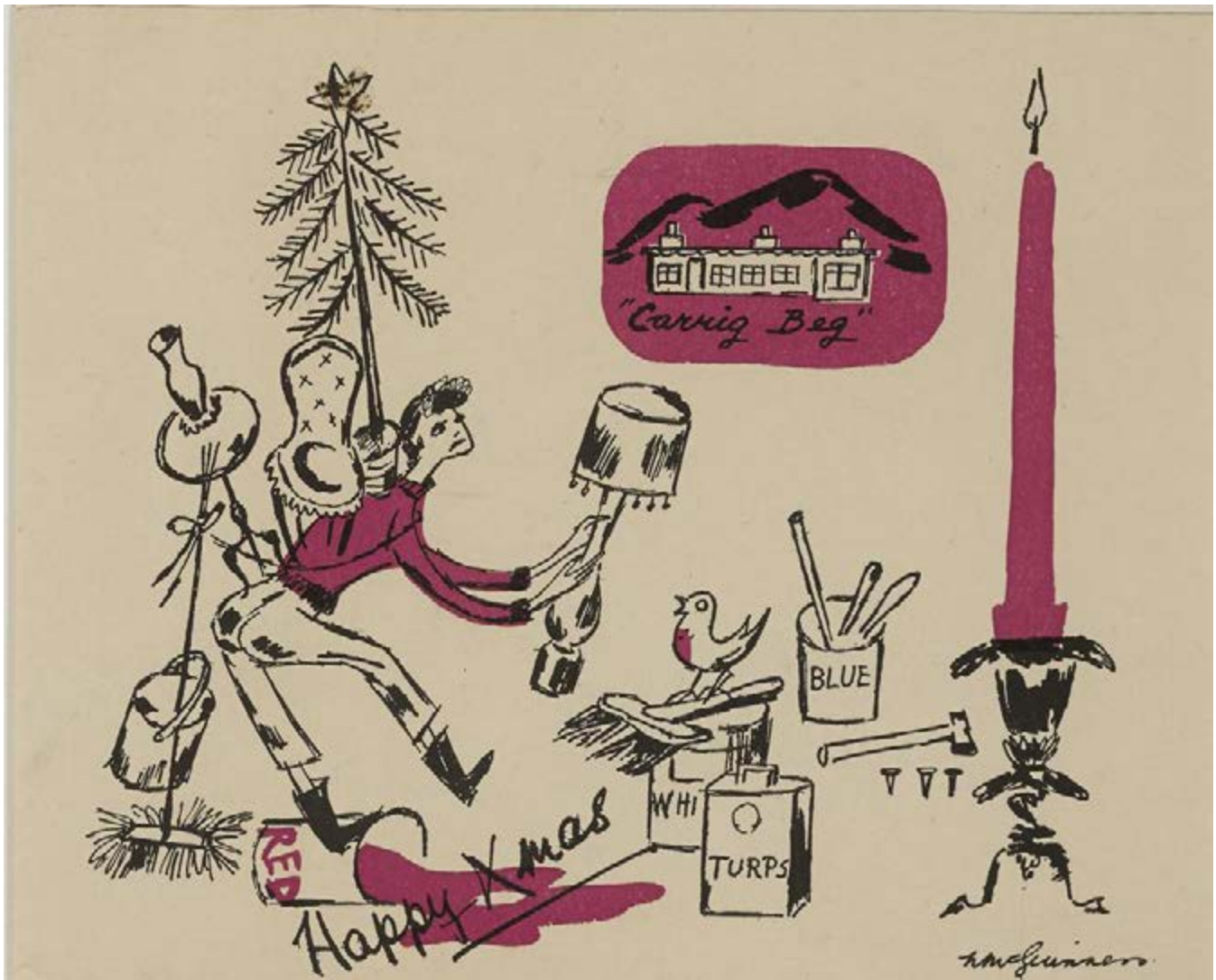
Provenance:

Whyte's, Dublin, 8 March 2000, ex lot 174;

Private collection

€150-€200 (£110-£140 approx.)

[Large Image & Place Bid Lot 1](#)



2

Norah McGuinness HRHA (1901-1980)

CHRISTMAS DECORATING, CARRIG BEG

hand-printed greeting card

signed and dedicated on reverse

5½ x 6¾in. (13.97 x 17.15cm)

Provenance:

Whyte's, Dublin, 8 March 2000, ex lot 174;

Private collection

€150-€200 (£110-£140 approx.)

[Large Image & Place Bid Lot 2](#)



3

Norah McGuinness HRHA (1901-1980)

CHRISTMAS GREETINGS, WOMAN AND CHRISTMAS TREE OVERLOOKING A SQUARE

hand-printed greeting card

signed and dedicated on reverse

6¾ x 5¼in. (17.15 x 13.34cm)

Provenance:

Whyte's, Dublin, 8 March 2000, ex lot 174;

Private collection.

Possibly Fitzwilliam Square, Dublin where McGuinness had her home and studio at number 13.

Dedication verso mentions her role as a window-dresser and trips abroad to Holland and Rome.

€150-€200 (£110-£140 approx.)

[Large Image & Place Bid Lot 3](#)



4

Norah McGuinness HRHA (1901-1980)

A HAPPY XMAS, NO. 13 [FITZWILLIAM SQUARE, DUBLIN]

hand-printed card

signed and dedicated on reverse

8¾ x 3¼in. (22.23 x 8.26cm)

Provenance:

Whyte's, Dublin, 8 March 2000, ex lot 174;

Private collection

13 Fitzwilliam Sq., Dublin was the artist's studio and home.

A note on reverse mentions the sale of 28 pictures by the artist.

€150-€200 (£110-£140 approx.)

[Large Image & Place Bid Lot 4](#)



5

Norah McGuinness HRHA (1901-1980)

MERRY XMAS, FIREPLACE AT 13 FITZWILLIAM SQUARE

hand-printed greeting card

signed and dedicated on reverse

6½ x 8¼in. (16.51 x 20.96cm)

Provenance:

Whyte's, Dublin, 8 March 2000, ex lot 174;

Private collection

13 Fitzwilliam Sq., Dublin was the artist's studio and home.

With mention of Rathmullen house and sales of her paintings on reverse.

€150-€200 (£110-£140 approx.)

[Large Image & Place Bid Lot 5](#)



6

Norah McGuinness HRHA (1901-1980)

GREETINGS, 13 FITZWILLIAM SQUARE IN YELLOW, PINK AND PURPLE

hand-printed greeting card

signed on dedicated on reverse

5¾ x 7¾in. (14.61 x 19.69cm)

Provenance:

Whyte's, Dublin, 8 March 2000, ex lot 174;

Private collection

13 Fitzwilliam Sq., Dublin was the artist's studio and home.

€150-€200 (£110-£140 approx.)

[Large Image & Place Bid Lot 6](#)



7

Norah McGuinness HRHA (1901-1980)

CHRISTMAS GREETINGS, 13 FITZWILLIAM SQUARE

hand-coloured greeting card

signed and dedicated on reverse

8¾ x 6¾in. (22.23 x 17.15cm)

Provenance:

Whyte's, Dublin, 8 March 2000, ex lot 174;

Private collection

13 Fitzwilliam Sq., Dublin was the artist's studio and home.

€150-€200 (£110-£140 approx.)

[Large Image & Place Bid Lot 7](#)



8

Norah McGuinness HRHA (1901-1980)

A HAPPY XMAS

hand-printed greeting card

signed and dedicated on reverse

3½ x 5½in. (8.89 x 13.97cm)

Provenance:

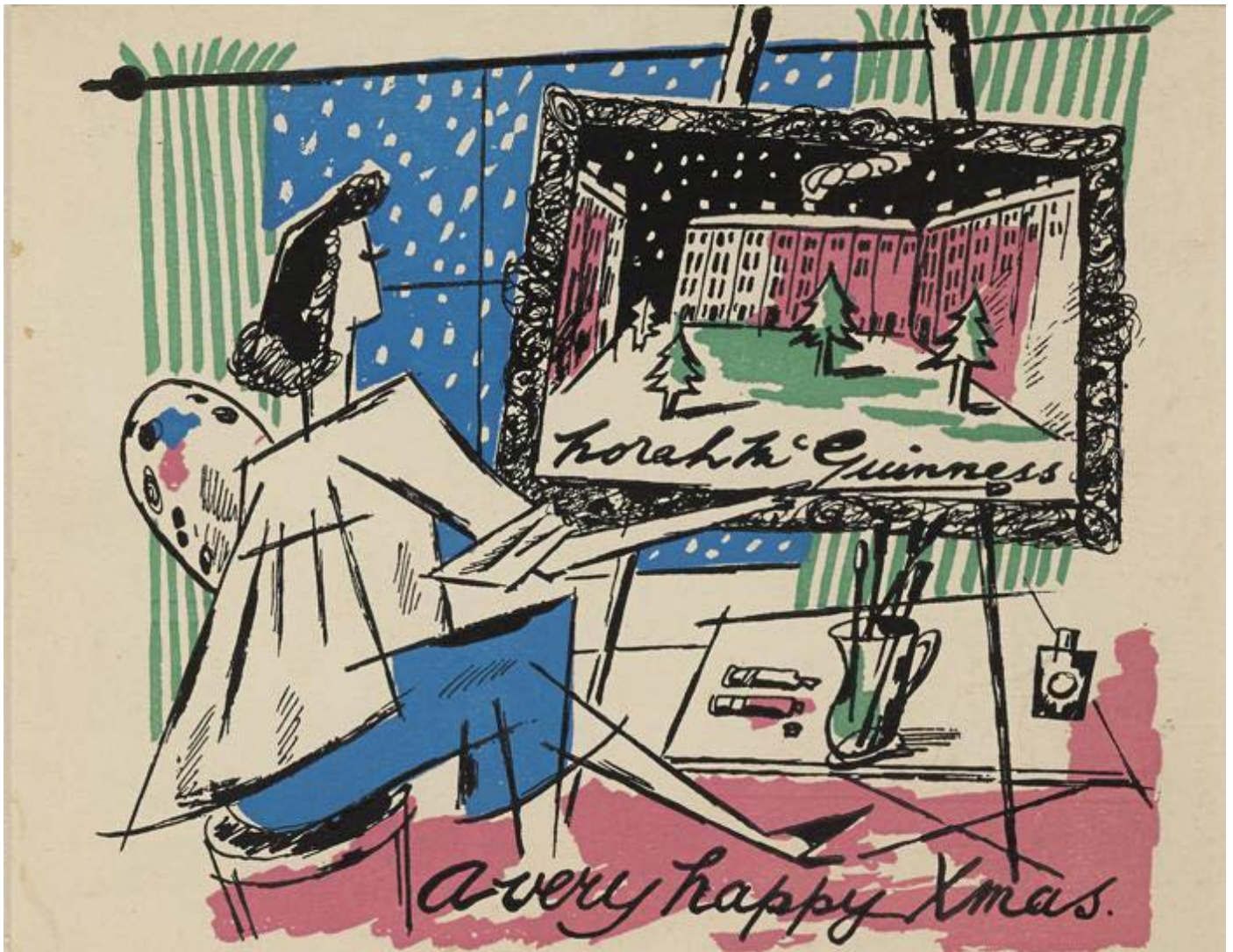
Whyte's, Dublin, 8 March 2000, ex lot 174;

Private collection

Note on reverse mentions sale of her pictures to one Eric Newton and another gallery "is considering a purchase also."

€150-€200 (£110-£140 approx.)

[Large Image & Place Bid Lot 8](#)



9

Norah McGuinness HRHA (1901-1980)

A VERY HAPPY XMAS, AT THE EASEL

hand-printed greeting card

signed in the plate

5½ x 6¾in. (13.97 x 17.15cm)

Provenance:

Whyte's, Dublin, 8 March 2000, ex lot 174;

Private collection

€150-€200 (£110-£140 approx.)

[Large Image & Place Bid Lot 9](#)



10

Norah McGuinness HRHA (1901-1980)

ANGEL IN SNOW GLOBE [CHRISTMAS CARD]

hand-printed greeting card

signed and dedicated on reverse

6½ x 9¾in. (16.51 x 24.77cm)

Provenance:

Whyte's, Dublin, 8 March 2000, ex lot 174;

Private collection

Artist mentions sales of her paintings at CEMA and in Belfast in her note visible verso.

€150-€200 (£110-£140 approx.)

[Large Image & Place Bid Lot 10](#)



11

Helen Lillias Mitchell (1915-2000)

OLD PORTOBELLO, RATHMINES, 1940

gouache

signed lower left; with inscribed Victor Waddington label on reverse detailing title, price [£5-5-0] and artist's address [Milverton, Temple Road, Dublin]

9¾ x 13¾in. (24.77 x 34.93cm)

Provenance:

Victor Waddington Galleries, Dublin;

Private collection;

Whyte's, 1 October 2012, lot 147;

Private collection

Exhibited:

Watercolour Society of Ireland, 1940, exhibition no. 102

Contained in original Victor Waddington frame.

€400-€600 (£290-£430 approx.)

[Large Image & Place Bid Lot 11](#)



12

Patrick Leonard HRHA (1918-2005)

FLOWERS IN A VASE (HYDRANGEA AND DAHLIAS), c.1949

oil on canvas

signed lower right; inscribed with title on reverse

24 x 20in. (60.96 x 50.80cm)

Provenance:

Purchased from the artist in the 1960s and 1970s by
George McClelland; From whom acquired by the previous owner;
Whyte's, 21 February 2006, lot 38;
Private collection

€700-€900 (£500-£650 approx.)

[Large Image & Place Bid Lot 12](#)



13

Ernest Columba Hayes RHA (1914-1978)

SLUICE BEHIND SWORDS, COUNTY DUBLIN" c.1929-1931"

gouache

signed lower right; inscribed on reverse thus Sluice behind "Swords, Co. Dublin main street, (on left from Dublin) when I was 17 Years old or possibly 15 years / 1931 or 1929"

10¼ x 7¼in. (26.04 x 18.42cm)

Provenance:

Estate of Hildegard Hayes, the artist's wife;

Whyte's, 9 December 2012, ex lot 159;

Whence purchased by the present owner

A Dublin born artist, Hayes was a student at the Dublin Metropolitan School of Art in the years 1931 to 1934, where he studied under Seán Keating and had his first painting accepted by the Royal Hibernian Academy while still a student there. He went on to regularly show at the RHA for the rest of his life. He joined the Dublin Sketching Club in 1935 later becoming the clubs secretary. He had his first one-man show at the Victor Waddington Galleries, Dublin in 1937. In 1942 he was elected Associate of the RHA and three years later in 1945 became a full member. That same year he married Irma Verona Maguire (née Stranger-Jones) a pianist and divorcée in London. From 1946 to 1956 he was President of the Dublin Sketching Club after this period he relocated to London and in 1958 he completed a large portrait of the Duchess of Gloucester, now in St Botolph's Hall, which was exhibited in the Royal Society of Portrait Painters' Exhibition at the Royal Institute Galleries. Irma died in Dublin in 1959 after battling with cancer. Later that year Hayes met Hildegard von Hob in Gelting, Germany whom he married in 1960. From this point until 1977 he travelled extensively throughout Europe working in Italy, France and Germany. A year after his death the RHA commemorated Hayes in a memorial section. Thirteen years later, in 1992 a memorial exhibition was held at the Hugh Lane Municipal Gallery of Modern Art some examples from this exhibition are included in this collection. Hayes made his home in County Wicklow from the mid-1960s. Anne Crookshank highlighted his love of the land in the exhibition catalogue for Hayes' 1992 Hugh Lane exhibition, "We can be proud with Ernest Hayes of our lovely East coast as well as of the West which so many of his contemporaries preferred. He is a painter of everyday people and everyday places but he see them and makes us see them as poetry."

€200-€300 (£140-£220 approx.)

Large Image & Place Bid Lot 13



13A

Seán O'Sullivan RHA (1906-1964)

SKETCH OF THE ARTIST'S WIFE AND DAUGHTERS IN THEIR FAMILY KITCHEN

pencil

signed Seán" lower right"

13¾ x 12½in. (34.93 x 31¾cm)

Provenance:

Family of the artist

€150-€250 (£110-£180 approx.)

[Large Image & Place Bid Lot 13A](#)



14

Ciarán Clear (1920-2000)

NIGHT - ROARING WATER BAY, WEST CORK

oil on board

signed lower left; signed again, titled and inscribed [Cape Clear & Sherkin Island] on reverse; also with artist's studio card [Rush] affixed on reverse

13½ x 21½in. (34.29 x 54.61cm)

Provenance:

Macalisters Art Gallery, Dublin;

Where purchased by the present owners in 1985

€1500-€1800 (£1080-£1300 approx.)

Large Image & Place Bid Lot 14



15

John Butler Yeats RHA (1839-1922)

ATHLETIC MEETING LONG AGO

reproduction print

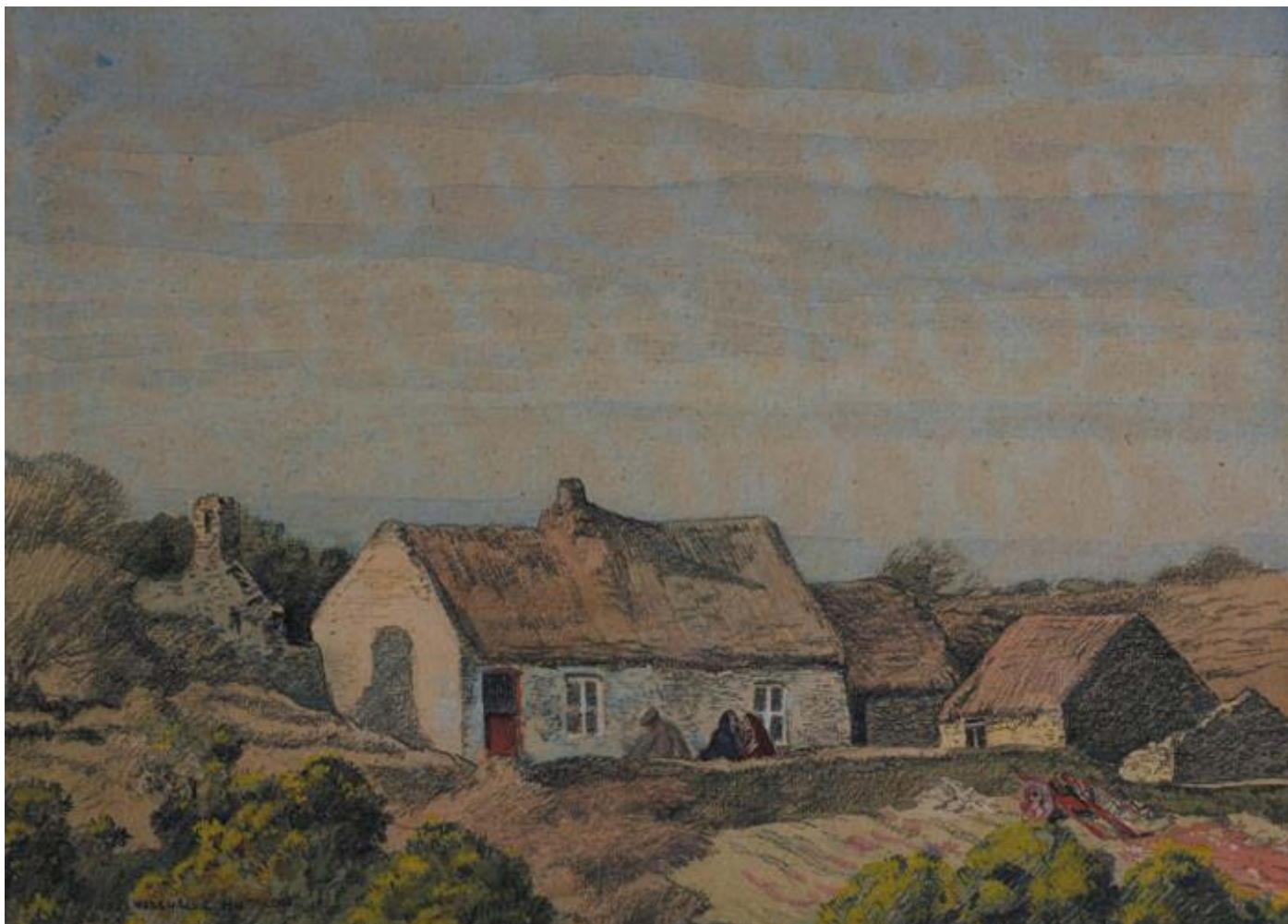
signed in pencil in the margin lower right; numbered [83] in ink lower left; signed in the plate lower left; with title and artist's name printed in the margin also; with Combridge label verso

3¾ x 6in. (9.53 x 15.24cm)

Sheet size, 7.75 by 9.75ins.

€200-€300 (£140-£220 approx.)

[Large Image & Place Bid Lot 15](#)



16

Marshall C. Hutson RHA (1903-2001)

COTTAGES AT DOOKS, GLENBEIGH, COUNTY KERRY

watercolour over pencil

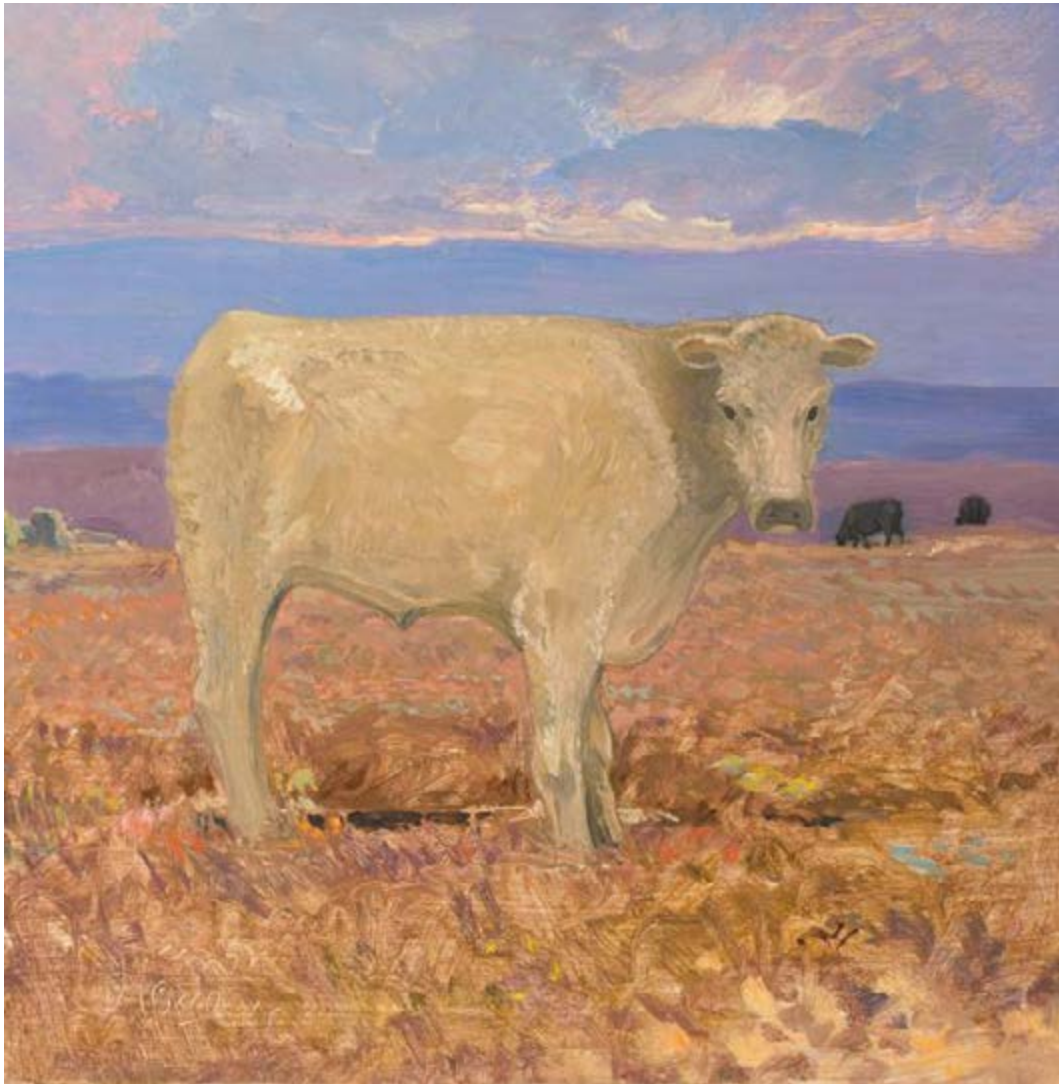
signed lower left; inscribed on reverse

11½ x 16in. (29.21 x 40.64cm)

Born in Bulwell, near Sherwood, Nottingham, Hutson trained at the Nottingham College of Art. In 1930 he moved to Cork, where his mother was born, and began teaching at the Crawford College of Art.

€150-€200 (£110-£140 approx.)

[Large Image & Place Bid Lot 16](#)



17

Jeremiah Hoad (1924-1999)

CATTLE ON THE BOG

oil on board

signed lower left; inscribed on reverse

24 x 24in. (60.96 x 60.96cm)

€800-€1200 (£580-£860 approx.)

[Large Image & Place Bid Lot 17](#)



18

William Mason (1906-2002)

FIGURES IN A BOAT YARD

oil on board

signed lower right

20 x 24in. (50.80 x 60.96cm)

Provenance:

The Collection of George McClelland, Belfast;

Private collection

€800-€1200 (£580-£860 approx.)

[Large Image & Place Bid Lot 18](#)



19

Anne Taylor (1907-1976) THE DELUGE

watercolour

signed lower right; with inscribed exhibition label on reverse

22 x 30in. (55.88 x 76.20cm)

Provenance:

William Rodman & Co., Belfast;

James Mullin, Belfast;

Brock Fine Arts,

Blackrock, Co. Dublin;

Whyte's, 19 February 2002, lot 190;

Private collection

Exhibited:

William Rodman & Co., Belfast, year unknown, exhibition no. 31 [£31-10-0] (catalogue untraced)

€500-€600 (£360-£430 approx.)

[Large Image & Place Bid Lot 19](#)



20

Arthur Armstrong RHA (1924-1996)

STILL LIFE WITH POTS

oil on board

signed lower left; inscribed with title on reverse; also titled on Tom Caldwell Gallery label and numbered [44] on reverse
20 x 24in. (50.80 x 60.96cm)

Provenance:

Tom Caldwell Gallery, Belfast;
Private collection

Exhibited:

'Arthur Armstrong', Tom Caldwell Gallery, Belfast, September - October 1970, catalogue no. 44

€1000-€1500 (£720-£1080 approx.)

[Large Image & Place Bid Lot 20](#)



21

Arthur Armstrong RHA (1924-1996)

SMALL GREEN FIELDS

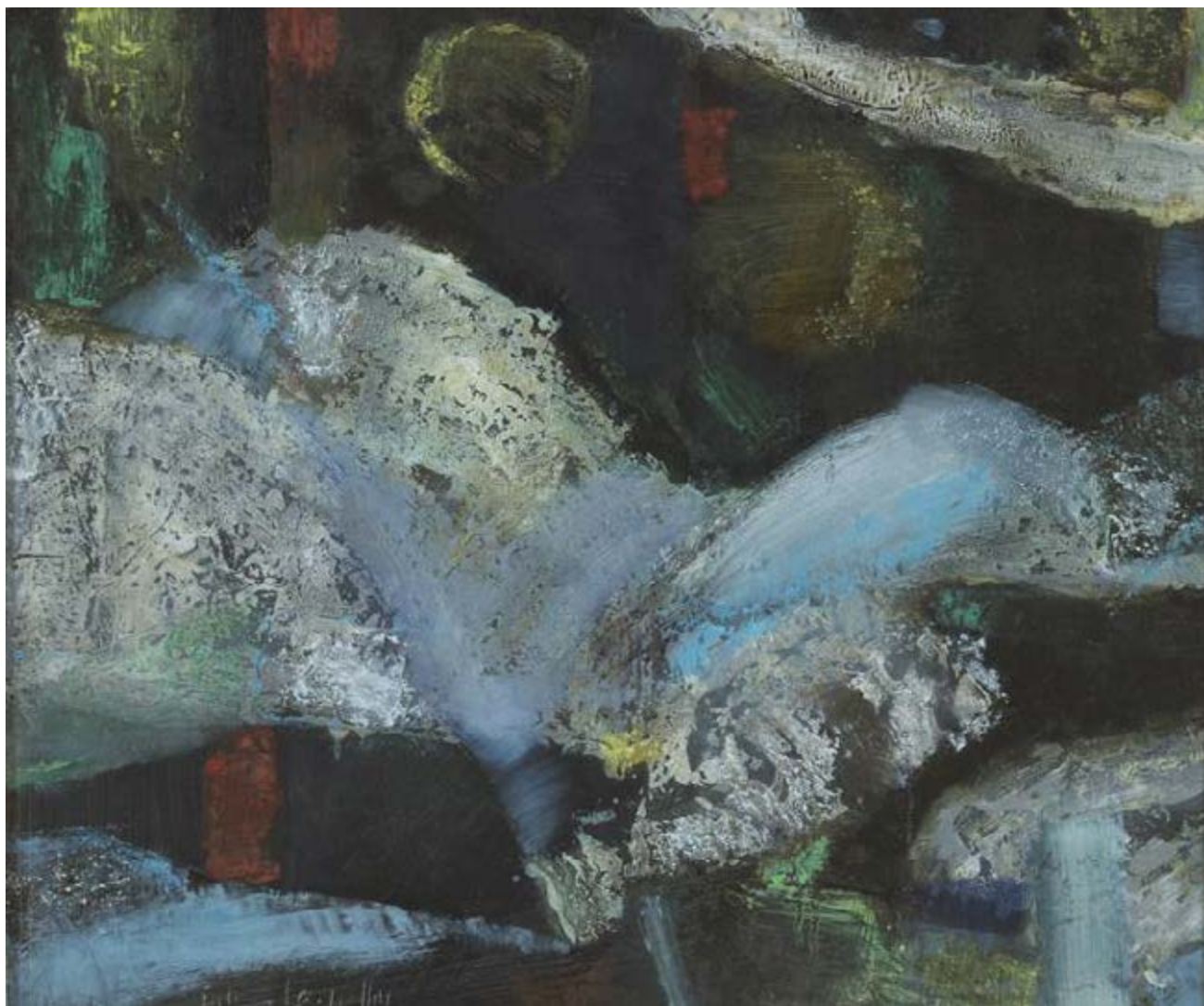
oil on board

signed lower left; titled on reverse

8 x 9in. (20.32 x 22.86cm)

€300-€500 (£220-£360 approx.)

[Large Image & Place Bid Lot 21](#)



22

Eileen Costelloe (1911-1976)

BUNBEG, COUNTY DONEGAL

oil on board

signed lower left; signed and titled on reverse

12½ x 15in. (31¾ x 38.10cm)

Solo shows by Eileen Costello were hosted by the Hendriks Gallery in 1962, 1965, 1971 and 1975. The first of her solo exhibitions comprised forty-five works, two in watercolour, the remainder in oil.

€150-€200 (£110-£140 approx.)

[Large Image & Place Bid Lot 22](#)



23

Anne King-Harman (1919-1979)

THE MADONNA OF THE MOUNT

oil on board

signed lower right

21 x 26in. (53.34 x 66.04cm)

Provenance:

de Vere's, 19 June 2001, lot 326;

The Collection of James O'Driscoll SC

€400-€600 (£290-£430 approx.)

[Large Image & Place Bid Lot 23](#)



24

Adge Baker (fl.1920-1980)

SNOW ON CHELSEA

oil on canvas

signed lower right; with inscribed label detailing title, artist's name and address on reverse; also with James Bourlet & Sons Ltd., Nassau St. & Mortimer St., London on reverse

12½ x 16in. (31¾ x 40.64cm)

Inscription on label on reverse gives the artist's address as, 6 Stamford Bridge Studios, Wandon Road, Chelsea. Adge Barker was an Anglo-Irish painter. She has a well publicised relationship with renowned New York artist and gallerist Betty Parsons (1900-1982) over a period of eight years while both artists were living in Paris in 1924. They shared a house together for six years living on Rue Boulard in Montparnasse following Parsons' divorce from fellow American Schuyler Livingston Parsons, eight years her senior. Supported by alimony while in Europe, Parsons spent her time in Paris painting and in the company of older like-minded members of the expatriate community such as Natalie Clifford Barney, Romaine Brooks, Sylvia Beach, Gertrude Stein, and Alice B. Toklas. She returned to the United States in 1933 and later opened the Betty Parsons Gallery in New York City in 1946 which soon became one of the most prestigious of the mid-twentieth century. It closed in 1981, a year before Parsons' death. Parsons' relationship in Paris with Adge Baker and her sexuality during her youth was stifled in her later years by the more repressive atmosphere she encountered in the US following WWII. Nonetheless, Parsons remains a very significant symbol of struggle against social oppression and is remembered as a staunch supporter of liberal thinking within the artistic community in America.

€150-€200 (£110-£140 approx.)

[Large Image & Place Bid Lot 24](#)



25

Patrick Scott HRHA (1921-2014)

CHRISTMAS CARD, 1976

screenprint

signed and dated lower right; inscribed [STW no. 1] lower left

11¾ x 9¾in. (29.85 x 24.77cm)

The initials STW stand for Scott Tallon Walker, the renowned architectural firm founded by Michael Scott and Norman D Good in 1928. Patrick Scott, a trained architect, worked closely as an artist with the firm as did others such as Patrick Heron, Louis le Brocquy and Michael Warren.

€200-€300 (£140-£220 approx.)

[Large Image & Place Bid Lot 25](#)



26

Patrick Scott HRHA (1921-2014)

CHRISTMAS CARD, 1977

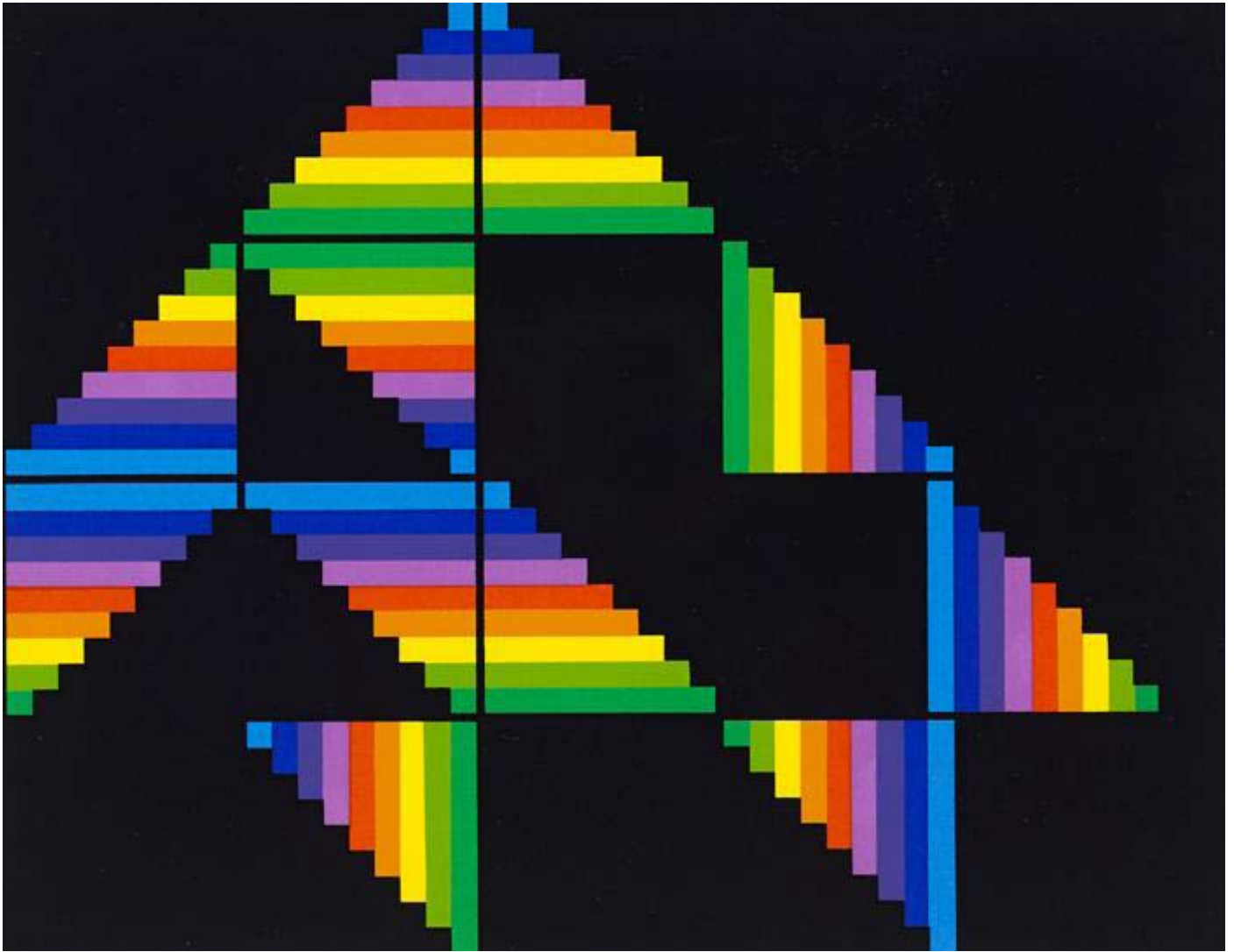
screenprint; (no. 25 from an edition of 50)

signed and dated lower right; numbered lower left

11¾ x 9¾in. (29.85 x 24.77cm)

€200-€300 (£140-£220 approx.)

[Large Image & Place Bid Lot 26](#)



27

Patrick Scott HRHA (1921-2014)

CHRISTMAS CARD, 1981

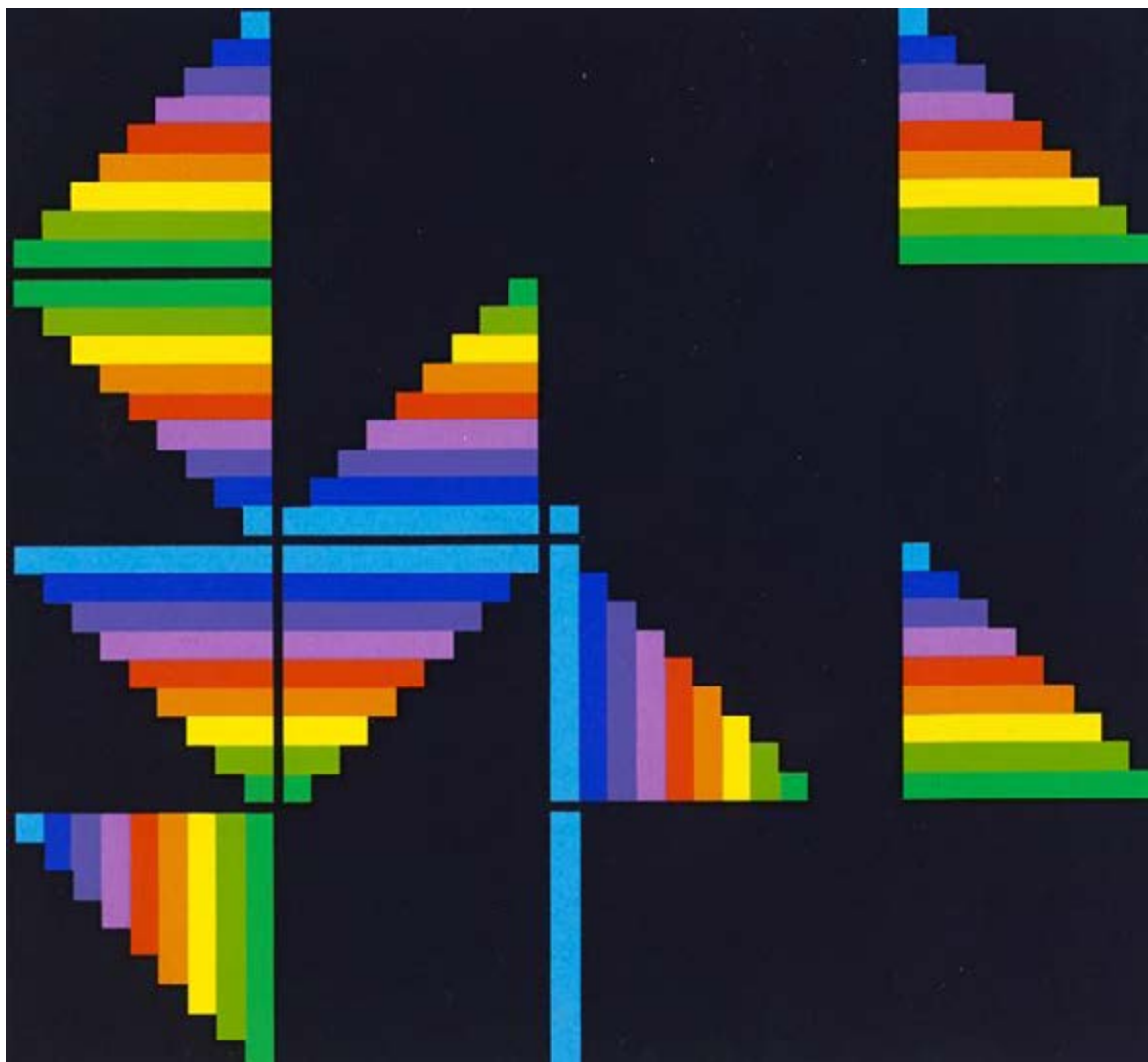
screenprint; (no. 20 from an edition of 50)

signed and dated lower right; numbered lower left

9¾ x 11¾in. (24.77 x 29.85cm)

€200-€300 (£140-£220 approx.)

[Large Image & Place Bid Lot 27](#)



28

Patrick Scott HRHA (1921-2014)

CHRISTMAS CARD, 1982

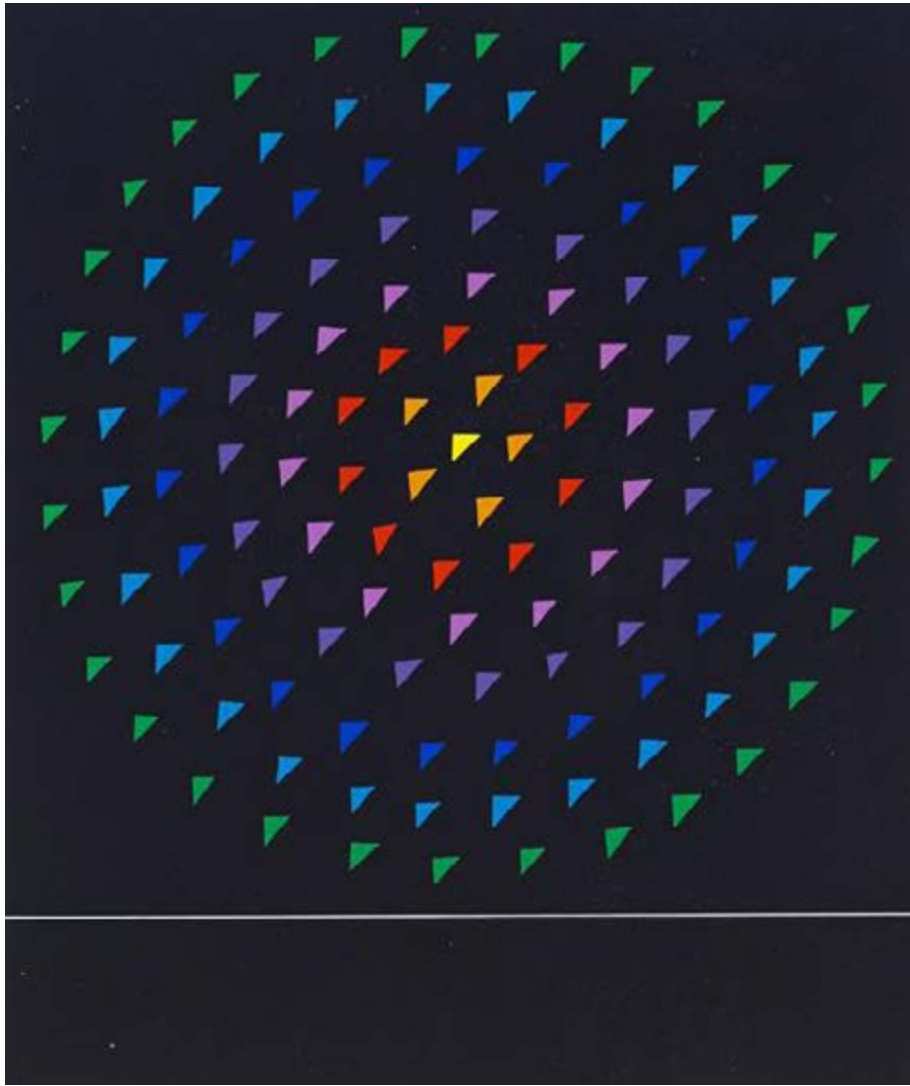
screenprint; (no. 14 from an edition of 50)

signed and dated lower right; numbered lower left

8¾ x 9½in. (22.23 x 24.13cm)

€200-€300 (£140-£220 approx.)

[Large Image & Place Bid Lot 28](#)



29

Patrick Scott HRHA (1921-2014)

CHRISTMAS CARD, 1986

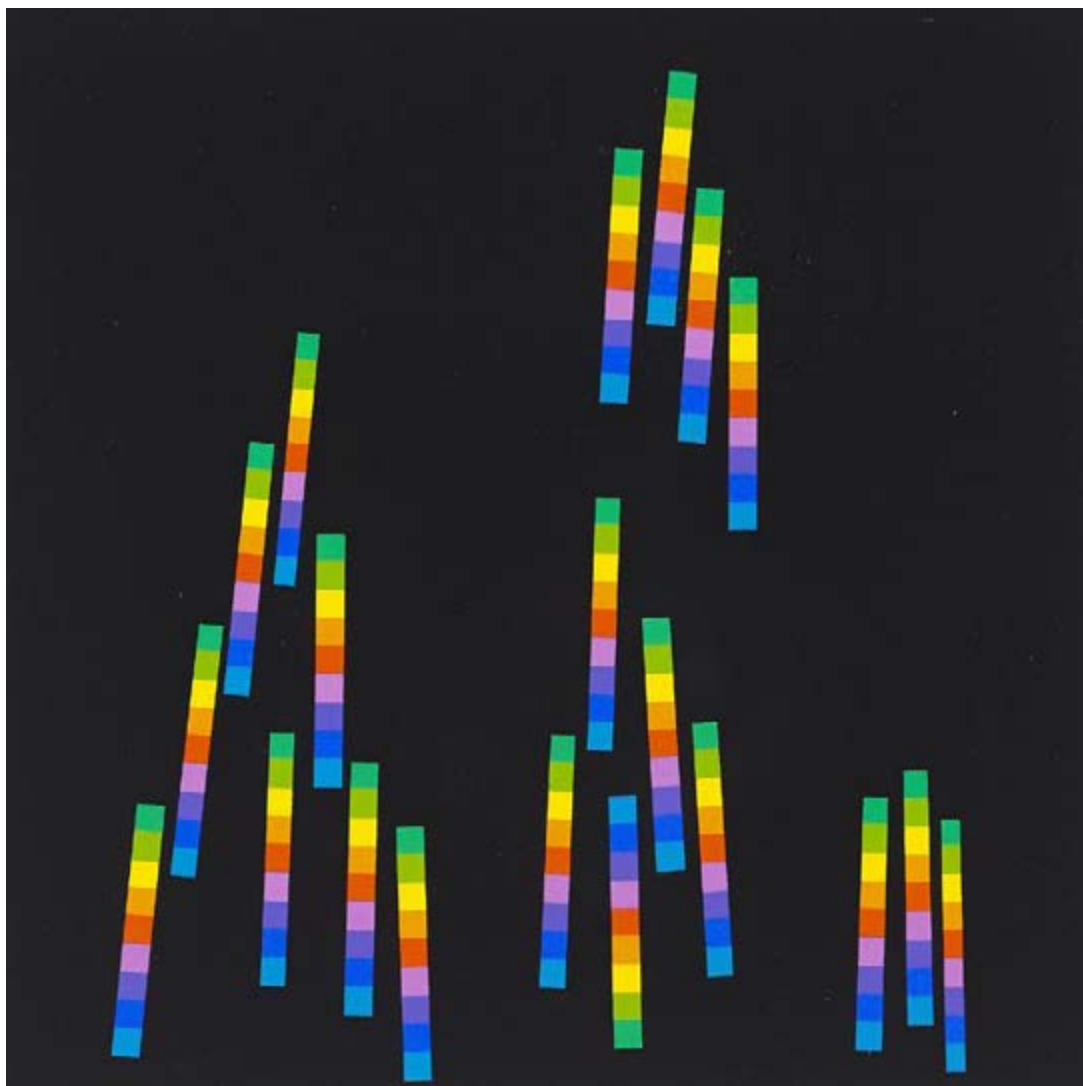
screenprint; (no. 36 from an edition of 60)

signed and dated lower right; numbered lower left

9¼ x 7¾in. (23½ x 19.69cm)

€200-€300 (£140-£220 approx.)

[Large Image & Place Bid Lot 29](#)



30

Patrick Scott HRHA (1921-2014)

CHRISTMAS CARD, 1983

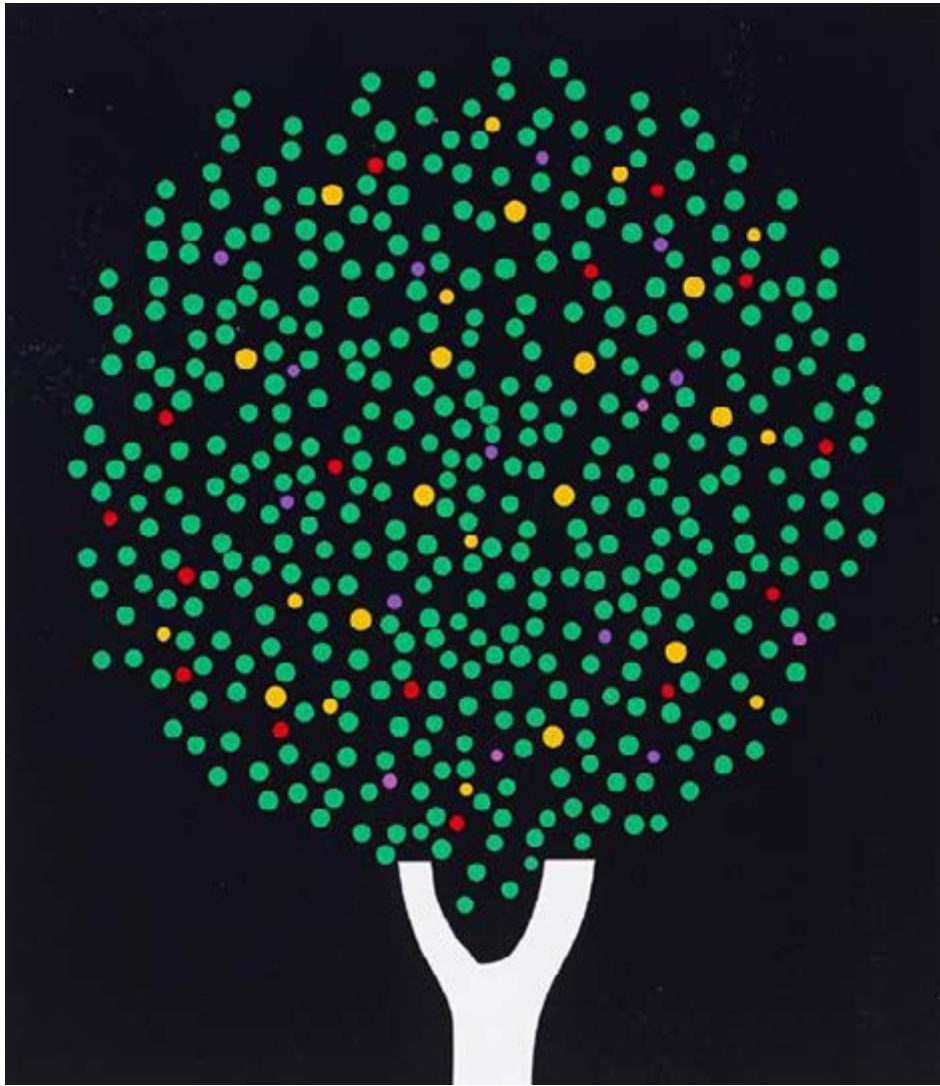
screenprint; (no. 23 from an edition of 60)

signed and dated lower right; numbered lower left

11¾ x 9¾in. (29.85 x 24.77cm)

€200-€300 (£140-£220 approx.)

[Large Image & Place Bid Lot 30](#)



31

Patrick Scott HRHA (1921-2014)

CHRISTMAS CARD, 1992

screenprint; (no. 6 from an edition of 50)

signed and dated lower right; numbered lower left

10 x 8¾in. (25.40 x 22.23cm):

€200-€300 (£140-£220 approx.)

[Large Image & Place Bid Lot 31](#)



32

Patrick Scott HRHA (1921-2014)

CHRISTMAS CARD, 1993

screenprint; (no. 13 from an edition of 50)

signed and dated lower right; numbered lower left

9¼ x 8¼in. (23½ x 20.96cm)

€200-€300 (£140-£220 approx.)

[Large Image & Place Bid Lot 32](#)



33

Patrick Scott HRHA (1921-2014)

CHRISTMAS CARD, 2000

screenprint; (no. 48 from an edition of 50)

signed and dated lower right; numbered lower left

10 x 8in. (25.40 x 20.32cm)

€200-€300 (£140-£220 approx.)

[Large Image & Place Bid Lot 33](#)



34

Patrick Scott HRHA (1921-2014)

CHRISTMAS CARD, 2009

screenprint; (no. 3 from an edition of 50)

signed and dated lower right; numbered lower left

9¾ x 7¾in. (24.77 x 19.69cm)

€200-€300 (£140-£220 approx.)

[Large Image & Place Bid Lot 34](#)



35

Patrick Scott HRHA (1921-2014)

LOTUS POND, CHRISTMAS CARD, 2012

screenprint

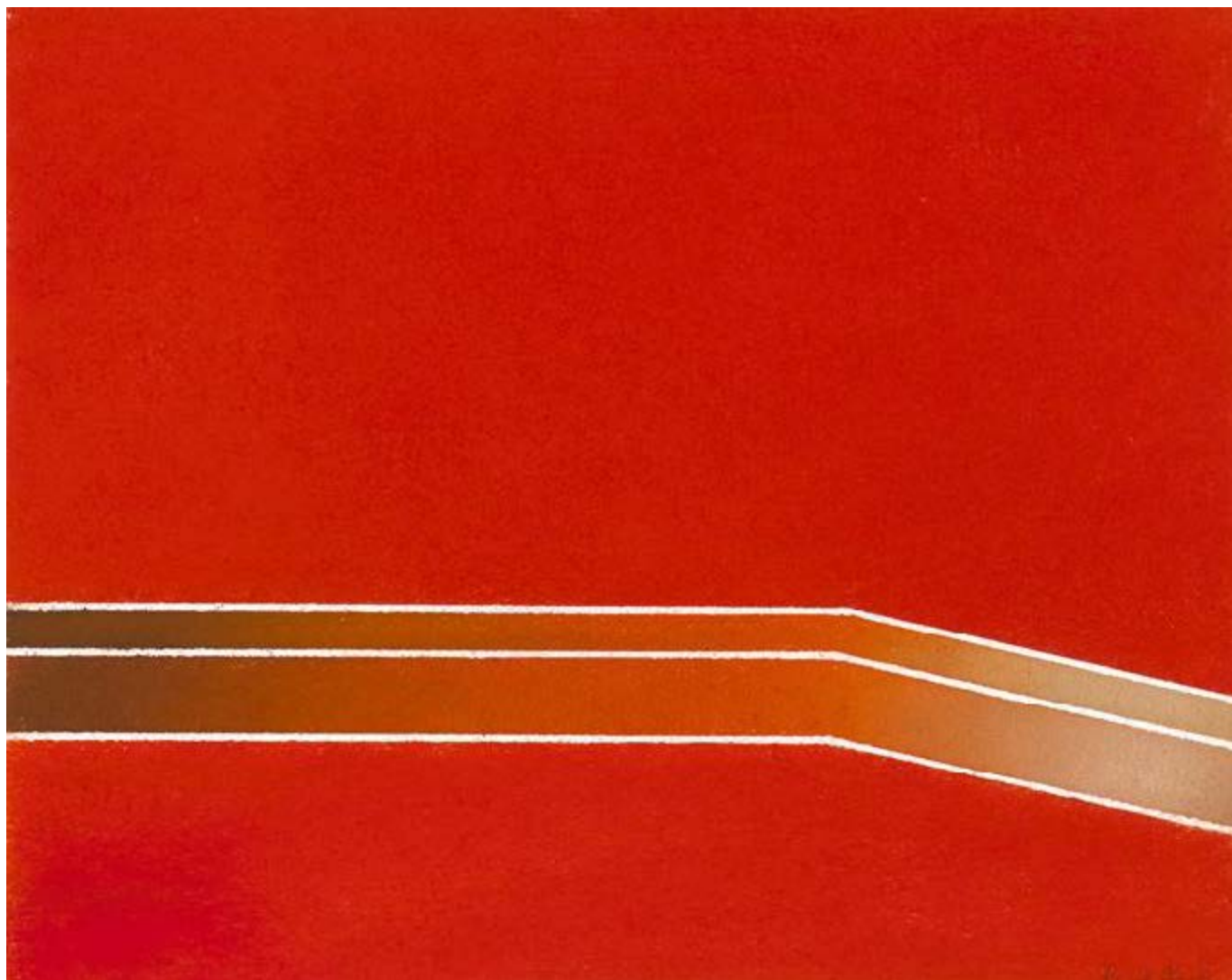
dated and with Scott" printed lower right; inscribed [STW 135] lower left; title printed centre"

10¼ x 7¾in. (26.04 x 19.69cm)

The initials STW stand for Scott Tallon Walker, the renowned architectural firm founded by Michael Scott and Norman D Good in 1928. Patrick Scott, a trained architect, worked closely as an artist with the firm as did others such as Patrick Heron, Louis le Brocquy and Michael Warren.

€100-€150 (£70-£110 approx.)

[Large Image & Place Bid Lot 35](#)



36

Cecil King (1921-1986)

ASPECT

oil on paper

signed in pencil lower right; with David Hendriks Gallery [Dublin] label on reverse

10 x 12½in. (25.40 x 31¾cm)

Provenance:

David Hendriks Gallery, Dublin;

Private collection

€500-€700 (£360-£500 approx.)

[Large Image & Place Bid Lot 36](#)



37

Cecil King (1921-1986)

BLACKROCK

oil on paper

signed in pencil lower right

8½ x 10½in. (21.59 x 26.67cm)

€300-€500 (£220-£360 approx.)

[Large Image & Place Bid Lot 37](#)



38

Cecily Brennan (b.1955)

OVERSHADOWED PATHWAY

oil on paper

with typed Taylor Galleries label on reverse

19¼ x 15in. (48.90 x 38.10cm)

Provenance:

Taylor Galleries, Dublin;

Private collection

The works from this Taylor Galleries show were inspired by the artist's time in the Rhododendron Gardens in Howth. This less defined, less ordered landscape differs from her work three years previous when she was living and working in Wicklow.

€300-€500 (£220-£360 approx.)

[Large Image & Place Bid Lot 38](#)



39

Hazel Walker (Scottish, b.1963)

CASSANO, 2003

oil on gesso panel

with artist name, title, date and medium on reverse

12 x 8in. (30.48 x 20.32cm)

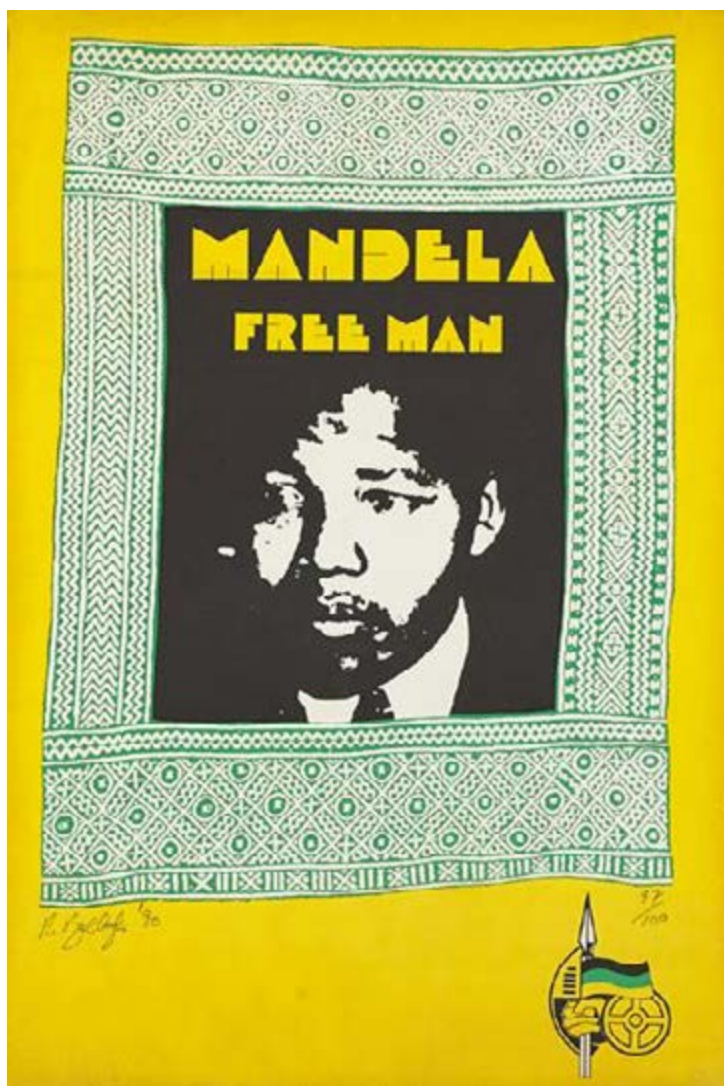
Provenance:

The Collection of James O'Driscoll SC

In a review in the Irish Times [19 March 1998] Brian Fallon described Walker's work as subtle, elegant and beautifully painted, with a certain element of mystery added."

€600-€800 (£430-£580 approx.)

[Large Image & Place Bid Lot 39](#)



40

Robert Ballagh (b.1943)

MANDELA FREE MAN, 1990

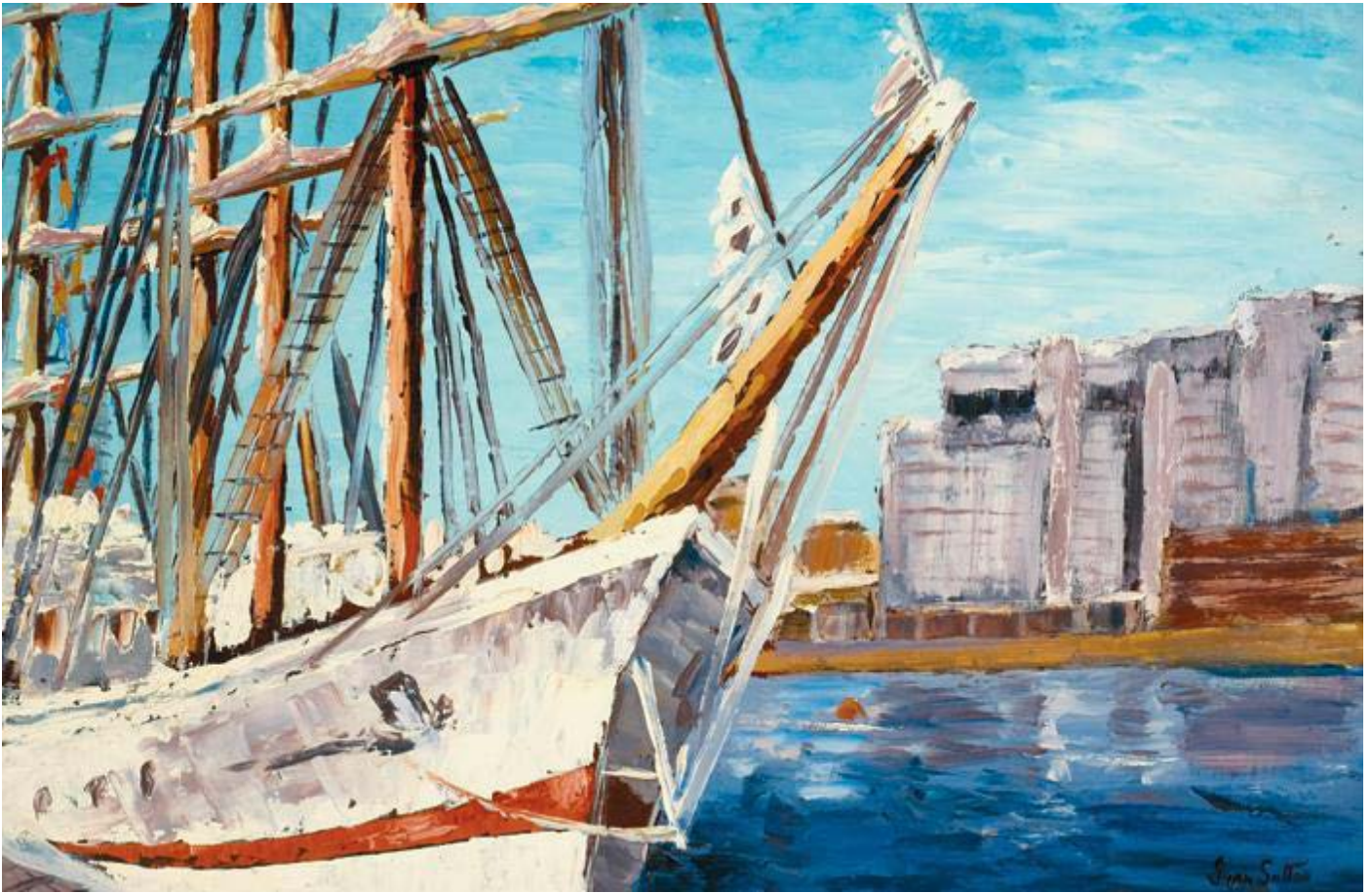
silk screen print; (no. 57 from an edition of 100)

signed and dated lower left; numbered lower right

24 x 16½in. (60.96 x 41.91cm)

€400-€500 (£290-£360 approx.)

Large Image & Place Bid Lot 40



41

Ivan Sutton (b.1944)

TALL SHIPS, DUBLIN PORT, 1998

oil on canvas board

signed lower right; signed again and with title on artist's label on reverse

20 x 30in. (50.80 x 76.20cm)

Provenance:

Purchased directly from the artist by the present owner

€300-€500 (£220-£360 approx.)

[Large Image & Place Bid Lot 41](#)



42

Kevin Geary (b.1952)

WATERFALL, NO. 1, 2014

oil on canvas

signed, dated and titled on reverse

20 x 20in. (50.80 x 50.80cm)

Born in England to Irish parents, Kevin Geary has worked primarily as a portrait artist and has exhibited widely throughout Europe and the USA. During the mid-1970s he lived in Dublin and Waterford and held an early one-man show at the Setanta Gallery. His portrait of Cyril Cusack was donated by the sitter to the Abbey Theatre, where hangs another of Geary's commissions: his portrait of Sean O'Casey. Other examples of his work can be found in the National Portrait Collection (London), the Fine Arts Museums of San Francisco and numerous private collection. He now lives in the United States in Arizona.

€200-€300 (£140-£220 approx.)

[Large Image & Place Bid Lot 42](#)



43

Robert Ballagh (b.1943)

SILICON SUITE, I [THE PLOUGH AND THE STARS] 1986

silkscreen and etching on copper plate; (no. 41 from an edition of 286); (unframed)

each signed, numbered and dated in the lower margin

24 x 38in. (60.96 x 96.52cm)

€300-€400 (£220-£290 approx.)

Large Image & Place Bid Lot 43

Large Image & Place Bid Lot 43A

44

Robert Ballagh (b.1943)

THE PLOUGH AND THE STARS (SILICON SUITE, I) 1986

silkscreen and etching on copper plate; (no. 50 from an edition of 286)

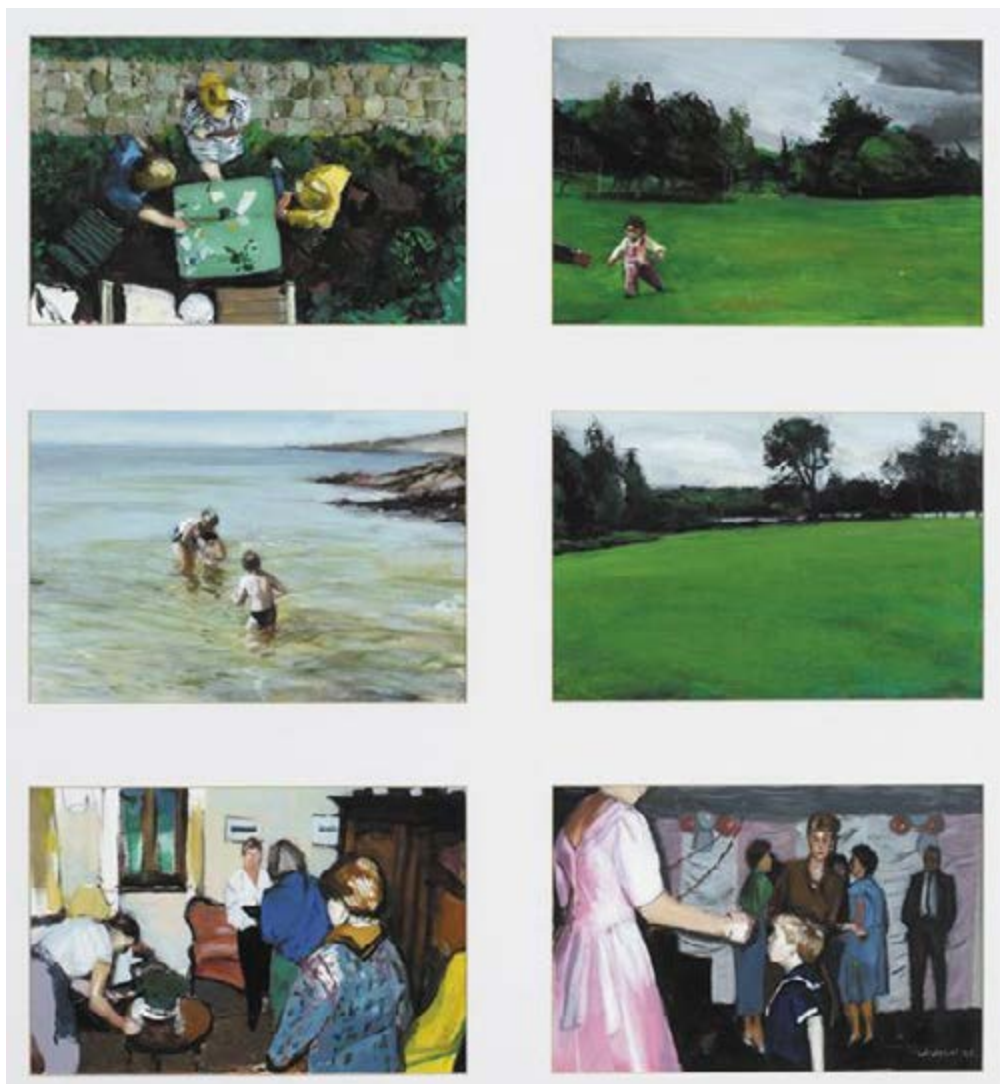
signed, numbered and dated in the lower margin

24 x 38in. (60.96 x 96.52cm)

Titles of all three works in this suite, *The Plough and the Stars*, *The Global Embrace* and *The Ambidextrous Paradigm*.

€300-€400 (£220-£290 approx.)

Large Image & Place Bid Lot 44



45

Peter Fitzgerald (b.1956)

ADELHEIDSTR 10: R, A, B; CHILD AND FIELD; MAYO SEA; FIELD; PARTY; WEDDING DANCE, 1995

oil on canvas; (six panels framed as one)

signed and dated lower right; inscribed on reverse; also with original exhibition poster on reverse

27¼ x 25in. (69.22 x 63½cm)

Exhibited:

'Eight Ducks & Other Paintings: A new exhibition by Peter Fitzgerald', Kenny's, Galway, 15 September to 6 October 1995, catalogue no. 31

Each panel measures 7.75 by 11.5in. and is based on a snapshot donated to the artist by various art students of his.

€800-€1000 (£580-£720 approx.)

Large Image & Place Bid Lot 45



46

Niamh Hurley (b.1942)

SPIRO GIRO, 1985

mixed media on paper

signed and dated lower left; inscribed on reverse

20 x 25in. (50.80 x 63½cm)

Exhibited:

Hendriks Gallery, Dublin, circa 1985-90

€500-€700 (£360-£500 approx.)

[Large Image & Place Bid Lot 46](#)



47

Kevin Geary (b.1952)

FOUNTAIN, NO. 9

oil on canvas

signed and titled on reverse

20 x 20in. (50.80 x 50.80cm)

Born in England to Irish parents, Kevin Geary has worked primarily as a portrait artist and has exhibited widely throughout Europe and the USA. During the mid-1970s he lived in Dublin and Waterford and held an early one-man show at the Setanta Gallery. His portrait of Cyril Cusack was donated by the sitter to the Abbey Theatre, where hangs another of Geary's commissions: his portrait of Sean O'Casey. Other examples of his work can be found in the National Portrait Collection (London), the Fine Arts Museums of San Francisco and numerous private collection. He now lives in the United States in Arizona.

€200-€300 (£140-£220 approx.)

[Large Image & Place Bid Lot 47](#)



48

Michael Cullen RHA (b.1946)

PALETTE, 1999

watercolour

signed and dated lower left; signed, dated and titled on reverse

22 x 30in. (55.88 x 76.20cm)

€500-€700 (£360-£500 approx.)

[Large Image & Place Bid Lot 48](#)



49

Jacqueline Stanley ARCA (b.1928)

HARE ISLAND, 1992

oil on canvas

signed lower right; titled, dated [23.7.92] and with exhibition number [No. 12, Dec] inscribed on label on reverse
19½ x 32in. (49.53 x 81.28cm)

Provenance:

The Collection of James O'Driscoll SC

Exhibited:

'Jacqueline Stanley, 15 year Retrospective, Wicklow to West Cork', West Cork Arts Centre, Cork, 2001, full-page illustration in catalogue; unpaginated (loaned by Mr & Mrs O'Driscoll)

Heir Island or Hare Island in West Cork is also known as Inishodriscol. Historically the island formed part of the O'Driscoll Clan's territory. It was thought that one of the O'Driscoll castles was sited on "An Dún" (now called the Doon) at the most westerly point of Heir Island.

€500-€700 (£360-£500 approx.)

[Large Image & Place Bid Lot 49](#)



50

Mike Fitzharris (b.1952)

LANDSCAPE

oil on board

signed lower right

14 x 20in. (35.56 x 50.80cm)

Mike Fitzharris graduated from Limerick School of Art in 1973 and completed post-graduate studies in Berlin at Hochschule für Bilden Kunst before returning to Ireland to teach and paint fulltime. He has exhibited internationally throughout his career and his talent has been recognised with an Arts Council Award (1996), Eigse's Open Exhibition Award (1997/2003), Royal Ulster Academy Award (1999) as well as prominent solo shows at the RHA Ashford Gallery and Galerie Alexandre, Paris. The OPW, Allied Irish Banks, The John Hunt Collection and Dublin Port and Docks Authority feature Fitzharris' work among their collections.

€500-€700 (£360-£500 approx.)

[Large Image & Place Bid Lot 50](#)



51

Michael Mulcahy (b.1952)

LANDSCAPE, 1983

mixed media

signed and dated lower right; signed and titled on reverse

29½ x 22½in. (74.93 x 57.15cm)

€500-€700 (£360-£500 approx.)

[Large Image & Place Bid Lot 51](#)



51A

Michael Cullen RHA (b.1946)

PAINTER AND MODEL, 1996

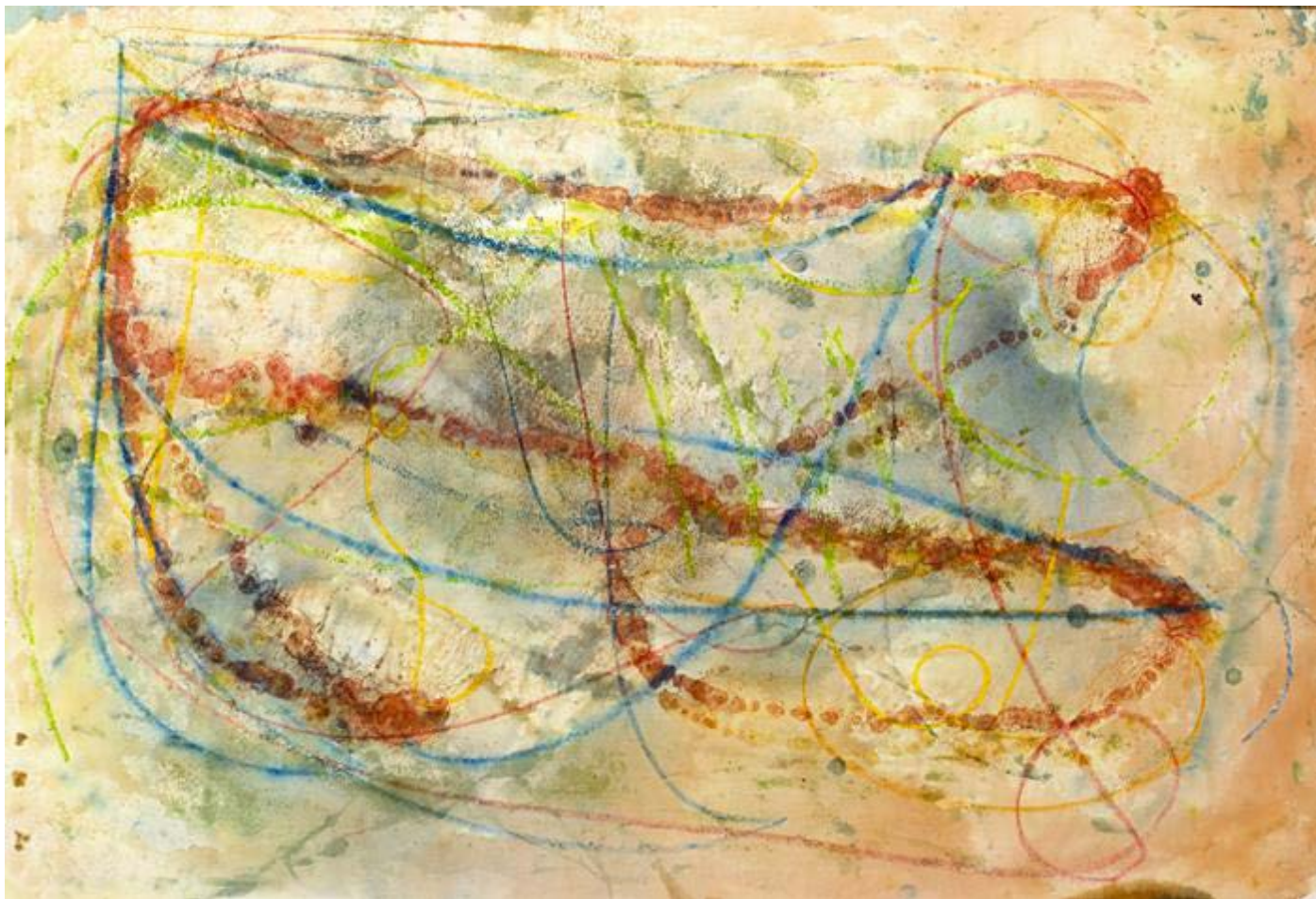
oil on canvas

signed, titled and dated on reverse

10 x 12in. (25.40 x 30.48cm)

€400-€600 (£290-£430 approx.)

[Large Image & Place Bid Lot 51A](#)



52

Matt Lamb (1932-2012)

UNTITLED ABSTRACT, 2005

watercolour and mixed media

signed and dated lower left

30 x 43½in. (76.20 x 110.49cm)

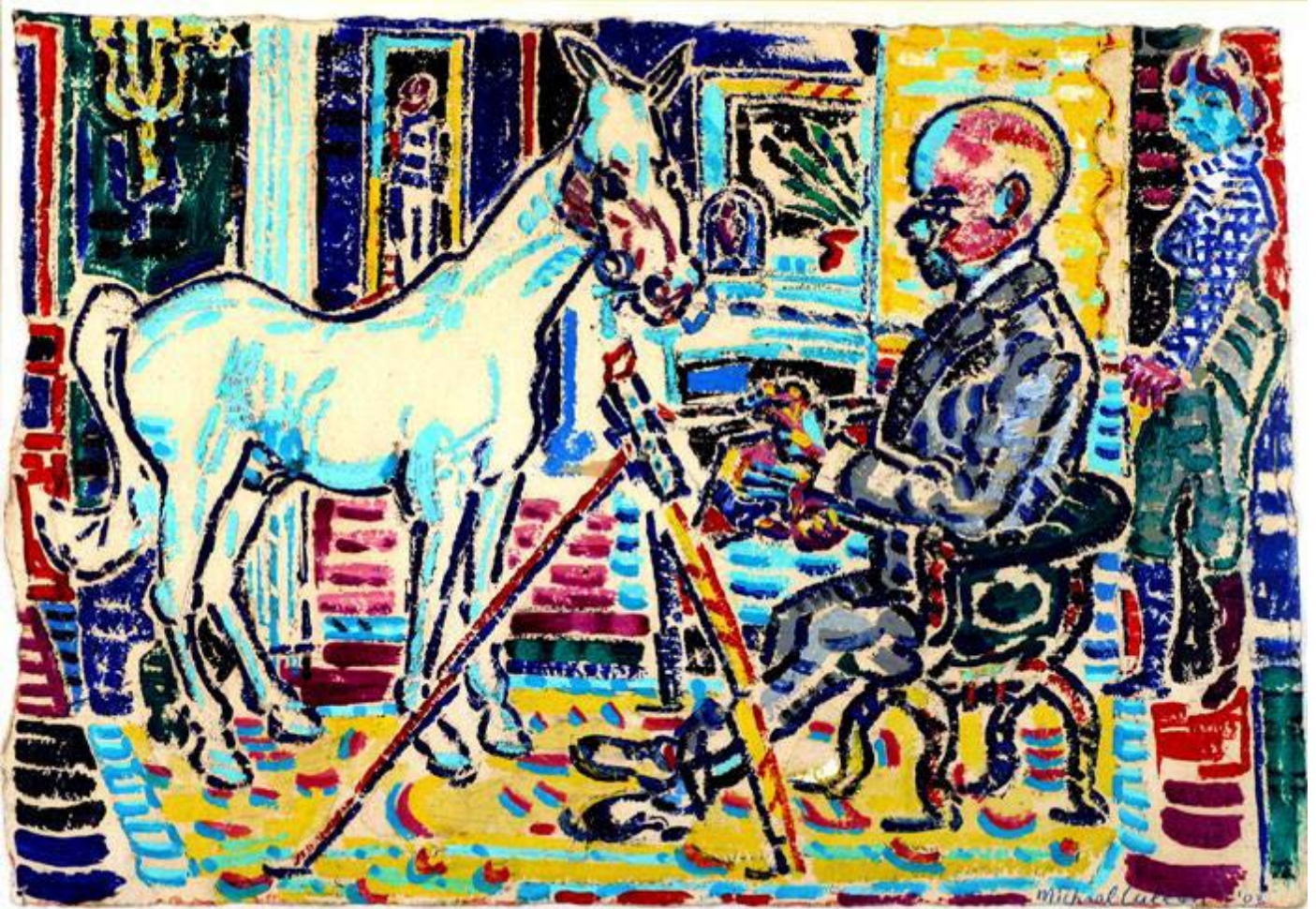
Provenance:

RDS Art Fair, Dublin, 2010;

Private collection

This work was presented by the artist Matt Lamb and The Warren Gallery to the RDS for their Art Fair Prize Draw in 2010.
€500-€700 (£360-£500 approx.)

[Large Image & Place Bid Lot 52](#)



52A

Michael Cullen RHA (b.1946)

THE VERSATILE PEER, 2003

oil on Indian handmade paper

signed and dated lower right; signed again, titled and dated on reverse; also with Taylor Galleries exhibition label on reverse

17½ x 25in. (44.45 x 63½cm)

Provenance:

Taylor Galleries, Dublin;

Private collection

Exhibited:

Taylor Galleries, Dublin, June 2004, catalogue no. 17

€500-€700 (£360-£500 approx.)

[Large Image & Place Bid Lot 52A](#)



53

Joseph O'Connor (b.1936)

HEAD

oil on paper

with David Hendriks exhibition label on reverse; with David Hendriks framing label also on reverse

19½ x 12¾in. (49.53 x 32.39cm)

Provenance:

David Hendriks Gallery, Dublin;

Whence purchased by James O'Driscoll SC

€100-€150 (£70-£110 approx.)

Large Image & Place Bid Lot 53



53A

Kevin Geary (b.1952)

FOUNTAIN, NO. 6

oil on canvas

signed and titled on reverse

20 x 20in. (50.80 x 50.80cm)

Born in England to Irish parents, Kevin Geary has worked primarily as a portrait artist and has exhibited widely throughout Europe and the USA. During the mid-1970s he lived in Dublin and Waterford and held an early one-man show at the Setanta Gallery. His portrait of Cyril Cusack was donated by the sitter to the Abbey Theatre, where hangs another of Geary's commissions: his portrait of Sean O'Casey. Other examples of his work can be found in the National Portrait Collection (London), the Fine Arts Museums of San Francisco and numerous private collection. He now lives in the United States in Arizona.

€200-€300 (£140-£220 approx.)

[Large Image & Place Bid Lot 53A](#)



54

Michael Mulcahy (b.1952)

FLOWERS FOR MY HONEY BUNNY SUZY

oil on paper

signed lower right; with title lower left

19¾ x 27¾in. (50.17 x 70.49cm)

Provenance:

Purchased directly from the artist by the present owner

€300-€400 (£220-£290 approx.)

[Large Image & Place Bid Lot 54](#)



55

Eamon O'Kane (b.1974)

FERRY PASSENGERS and A STREET IN AMERICA

oil on panel

each signed with initials lower right

5 x 7in. (12.70 x 17.78cm)

Eamon O'Kane has exhibited widely and is the recipient of many awards and scholarships including the Taylor Art Award, The Tony O'Malley Award and a Fulbright Award. Born in Belfast he lives and works in Odense, Denmark and Bergen, Norway.

€400-€600 (£290-£430 approx.)

Large Image & Place Bid Lot 55



56

Kevin Geary (b.1952)

SAILING INTO THE SQUALL

acrylic on canvas

signed and titled on reverse

20 x 20in. (50.80 x 50.80cm)

Born in England to Irish parents, Kevin Geary has worked primarily as a portrait artist and has exhibited widely throughout Europe and the USA. During the mid-1970s he lived in Dublin and Waterford and held an early one-man show at the Setanta Gallery. His portrait of Cyril Cusack was donated by the sitter to the Abbey Theatre, where hangs another of Geary's commissions: his portrait of Sean O'Casey. Other examples of his work can be found in the National Portrait Collection (London), the Fine Arts Museums of San Francisco and numerous private collection. He now lives in the United States in Arizona.

€200-€300 (£140-£220 approx.)

[Large Image & Place Bid Lot 56](#)



57

Betty Christie UWS WCSI

DESERTED MURLOUGH, DISTANT MOURNES, 2006

watercolour

signed and dated lower right; inscribed labels on reverse

18 x 30in. (45.72 x 76.20cm)

Provenance:

WCSI, Dublin;

Private collection

Exhibited:

WCSI, Dublin, 2006

Winner of the Whyte's Award at the 2006 WCSI exhibition.

€600-€800 (£430-£580 approx.)

[Large Image & Place Bid Lot 57](#)



58

Gerard Byrne (b.1958)

KHYBER LODGE, NERANO ROAD, DALKEY

oil on canvas

signed lower right

24½ x 29½in. (62.23 x 74.93cm)

€500-€700 (£360-£500 approx.)

[Large Image & Place Bid Lot 58](#)



59

Elizabeth Comerford (b.1953)

ODALISQUE

chalk on Fabriano paper

signed lower right; exhibition label on reverse

37½ x 25½in. (95¼ x 64.77cm)

Exhibited:

Seahorse Gallery, Balbriggan, Co. Dublin, 22 November, 2007, catalogue no. 1

€800-€1200 (£580-£860 approx.)

[Large Image & Place Bid Lot 59](#)



60

Elizabeth Brophy

THE FOREST GLADE

oil on board

signed lower right; inscribed with title on reverse; with Leinster Gallery [Dublin] label on reverse

15¼ x 19¼in. (38.74 x 48.90cm)

Provenance:

Leinster Gallery, Dublin;

Private collection

€750-€850 (£540-£610 approx.)

[Large Image & Place Bid Lot 60](#)



61

Michael Mulcahy (b.1952)

BED FLOWER

acrylic on canvas

signed lower right; inscribed with title and date [2002] on reverse

14 x 18in. (35.56 x 45.72cm)

€300-€500 (£220-£360 approx.)

[Large Image & Place Bid Lot 61](#)



62

Bernard Reynolds (b.1952)

GORSE, EARLY SPRING

oil on board

titled on reverse; with Oriel Gallery label also on reverse

11 x 14in. (27.94 x 35.56cm)

Provenance:

Oriel Gallery, Dublin;

Private collection

€300-€500 (£220-£360 approx.)

[Large Image & Place Bid Lot 62](#)



63

Elizabeth Brophy

STREET SCENE WITH SPIRE IN THE DISTANCE

oil on board

signed lower left

12 x 16in. (30.48 x 40.64cm)

€600-€800 (£430-£580 approx.)

[Large Image & Place Bid Lot 63](#)



64

John Dinan

STILL LIFE WITH FLOWERS

oil on board

signed lower left

24 x 22in. (60.96 x 55.88cm)

€500-€700 (£360-£500 approx.)

[Large Image & Place Bid Lot 64](#)



65

Frank Forty (1903-1996)

RED HEN

watercolour

7¼ x 10in. (18.42 x 25.40cm)

In Ireland, known for his watercolour landscapes of Donegal and Kerry, Frank Forty was a consultant surgeon as well as a musician and painter. He exhibited with the Royal Society of British Artists, the Medical Art Society (London), the Federation of British Artists and the Society of French Artists, as well as with various local and provincial English societies. He also showed work at the Paris Salon, where he was awarded Honours in 1970. He was a family friend of many notables including Gustav Holst, Sir Thomas Beecham and fellow musicians and artists.

€100-€150 (£70-£110 approx.)

[Large Image & Place Bid Lot 65](#)



66

Elizabeth Brophy

TOWARDS SALLY GAP

oil on board

signed lower right; titled on reverse

24 x 33in. (60.96 x 83.82cm)

€1000-€1500 (£720-£1080 approx.)

[Large Image & Place Bid Lot 66](#)



67

Deborah Watkins

BOG CUTTING AT SHANAHEEVER, COUNTY GALWAY, 2010

gouache

initialled lower right; signed, titled and dated on reverse

7¾ x 11 in. (19.69 x 27.94cm)

€100-€150 (£70-£110 approx.)

[Large Image & Place Bid Lot 67](#)



68

Kevin Geary (b.1952)

FOUNTAIN NO. 10

oil on canvas

signed and titled on reverse

20 x 20in. (50.80 x 50.80cm)

Born in England to Irish parents, Kevin Geary has worked primarily as a portrait artist and has exhibited widely throughout Europe and the USA. During the mid-1970s he lived in Dublin and Waterford and held an early one-man show at the Setanta Gallery. His portrait of Cyril Cusack was donated by the sitter to the Abbey Theatre, where hangs another of Geary's commissions: his portrait of Sean O'Casey. Other examples of his work can be found in the National Portrait Collection (London), the Fine Arts Museums of San Francisco and numerous private collection. He now lives in the United States in Arizona.

€200-€300 (£140-£220 approx.)

[Large Image & Place Bid Lot 68](#)



69

John Schwatschke (b.1943)

KIRRARY [RYAN'S DAUGHTER]

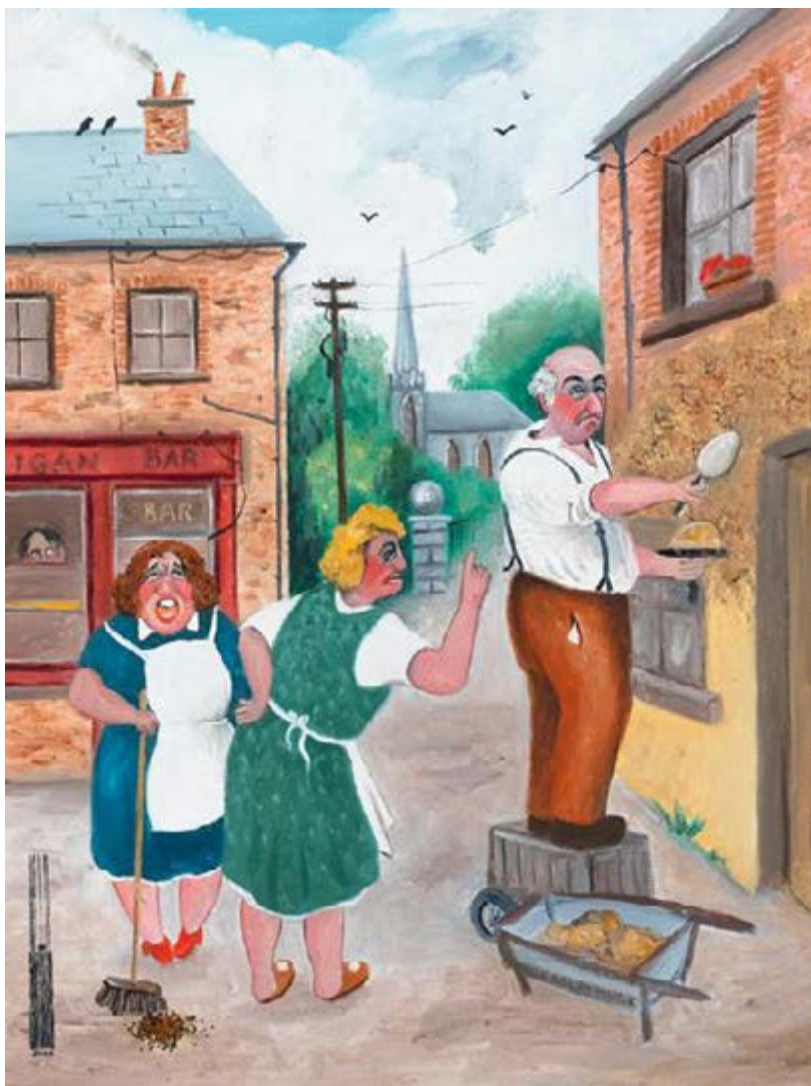
oil on canvas

signed, titled, numbered and described with artist's certificate of authenticity on reverse

19½ x 29½in. (49.53 x 74.93cm)

€700-€900 (£500-£650 approx.)

Large Image & Place Bid Lot 69



70

John Schwatschke (b.1943)

BALDERDASH, 2009

oil on canvas

signed in monogram and dated lower left; signed, titled and dated on reverse; also with archival stamp and number [2049] inscribed on reverse

17½ x 13½in. (44.45 x 34.29cm)

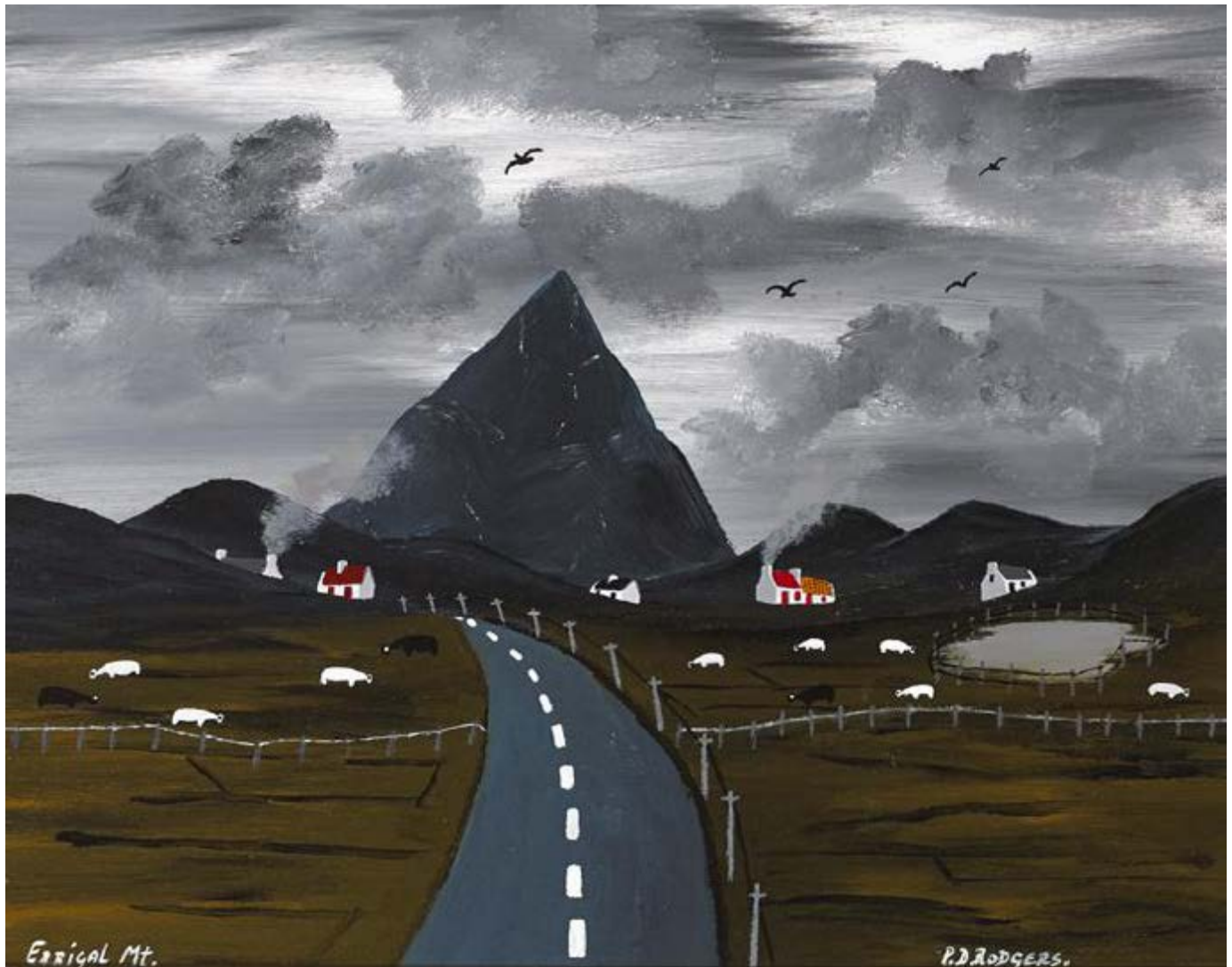
Provenance:

Whyte's, 15 March 2010, lot 261;

Private collection

€400-€500 (£290-£360 approx.)

Large Image & Place Bid Lot 70



71

Patsy Dan Rodgers (b.1945)

GOING TOWARDS ERRIGAL MOUNTAIN, DONEGAL

oil on board

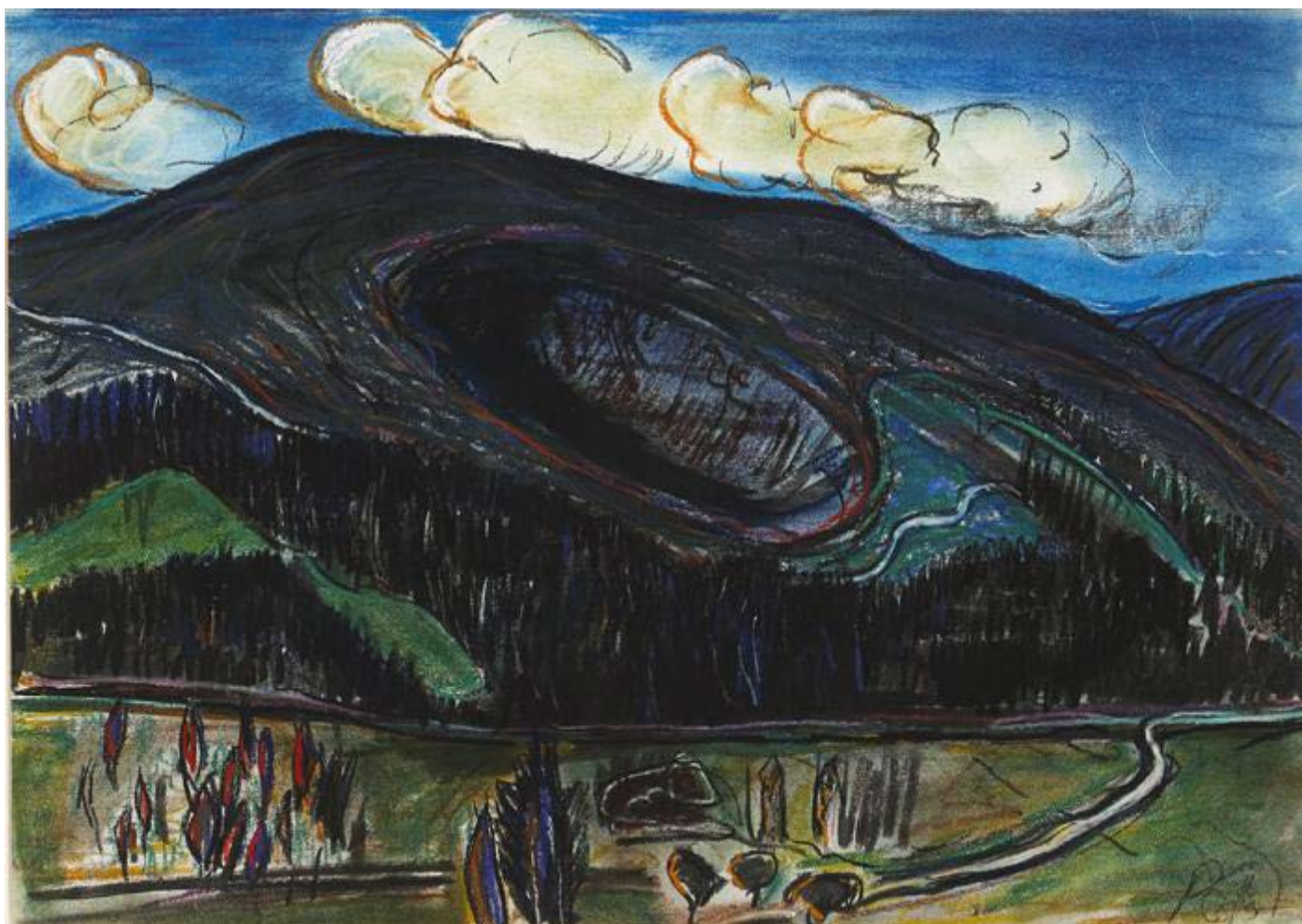
signed lower right; with location lower left; signed again [King of Tory] and inscribed with title on reverse

16 x 20in. (40.64 x 50.80cm)

Patsy Dan Rodgers, King of Tory, was one of the original members of the Tory Island Primitive School of Art, whose patron was the renowned artist Derek Hill. Patsy Dan, along with fellow artists, Anton Meenan, James Dixon and his brother, Ruairí Rodgers first brought their art from the isolated Gaeltacht area that is Tory Island into the public mainland domain when they held their inaugural collective exhibition at the New Gallery, Belfast in 1968. During these formative years, Rodgers was an instrumental campaigner against Government plans to relocate the inhabitants of Tory to the Donegal mainland following the 1974 storms which left those on Tory Island cut off for nearly two months. Owing to this, as well as his artistic and cultural contributions to the island, he has since been granted the title of King of Tory. In October 2003 the University of Ulster Art Gallery, Belfast paid homage to the naive style of this collective of artists in a group exhibition of Tory Islander art. Patsy Dan's continues to produce to date and has had recent exhibitions in the Cristeph Gallery, Letterkenny, County Donegal.

€500-€700 (£360-£500 approx.)

[Large Image & Place Bid Lot 71](#)



72

Peter Collis RHA (1929-2012)

HILLSIDE LANDSCAPE

oil pastel

signed lower right

19½ x 27½in. (49.53 x 69.85cm)

Provenance:

Acquired directly from the artist by the present owner

€500-€600 (£360-£430 approx.)

[Large Image & Place Bid Lot 72](#)



73

Kevin Geary (b.1952)

FOUNTAIN NO. 8

oil on canvas

signed and titled on reverse

20 x 20in. (50.80 x 50.80cm)

Born in England to Irish parents, Kevin Geary has worked primarily as a portrait artist and has exhibited widely throughout Europe and the USA. During the mid-1970s he lived in Dublin and Waterford and held an early one-man show at the Setanta Gallery. His portrait of Cyril Cusack was donated by the sitter to the Abbey Theatre, where hangs another of Geary's commissions: his portrait of Sean O'Casey. Other examples of his work can be found in the National Portrait Collection (London), the Fine Arts Museums of San Francisco and numerous private collection. He now lives in the United States in Arizona.

€200-€300 (£140-£220 approx.)

[Large Image & Place Bid Lot 73](#)



74

Markey Robinson (1918-1999)

TWO SHAWLIES IN BROWN LANDSCAPE WITH MOUNTAIN BEYOND

oil on board

signed lower right

18 x 23in. (45.72 x 58.42cm)

Provenance:

Fr. Ó Loideáin (Leyden) Mission Antiques, Clarendon St., Dublin;

Private collection

€1000-€1500 (£720-£1080 approx.)

[Large Image & Place Bid Lot 74](#)



75

Markey Robinson (1918-1999)

CLOWN WITH BLUE BOW TIE

gouache

signed lower left

11 x 9½in. (27.94 x 24.13cm)

€600-€800 (£430-£580 approx.)

[Large Image & Place Bid Lot 75](#)



76

Graham Knuttel (b.1954)

TWO RED FISH

oil on canvas

signed lower right

12 x 14in. (30.48 x 35.56cm)

€600-€800 (£430-£580 approx.)

[Large Image & Place Bid Lot 76](#)



77

Irish School (21st Century)

HANDCRAFTED ROCKING HORSE

mahogany, leather and brass

101 x 50 x 21½in. (256.54 x 127

This exceptionally beautiful traditional rocking horse has been handcrafted in Ireland in mahogany wood and set onto a mahogany frame, also hand crafted. The accessories kit includes full riding tack, decorative rosette, synthetic horse hair (mane and tail), stirrup leather and irons, bridle, leather reins and saddle. Proceeds go to the Irish Wheelchair Association (IWA) Resource and Outreach Services, Clontarf, Dublin 3. The IWA, a voluntary organisation, is the national organisation of people with limited mobility. It provides community based services. 2015 marks the association's 55th anniversary.

€800-€1200 (£580-£860 approx.)

[Large Image & Place Bid Lot 77](#)



78

Irish School (21st Century)

SEATED TEDDY BEAR

bronze

11 x 9½ x 7½in. (27.94 x 24.13 x

€300-€500 (£220-£360 approx.)

[Large Image & Place Bid Lot 78](#)



79

Maighread Tobin (b.1960)

LAYERED, 1998

slate and bronze; (unique)

signed and dated beneath

4 x 16 x 18in. (10.16 x 40.64 x

Provenance:

RHA, Dublin;

Private collection

Exhibited:

RHA, Dublin, 1998 (illustrated on p.23 of exhibition catalogue)

Tobin has won the following prestigious awards for her: 1984 Oireachtas Sculpture Award, 1987 Claremorris Open Exhibition Sculpture Award and the Alexandra Weichert Award at 1996 RHA Annual Exhibition.

€300-€400 (£220-£290 approx.)

Large Image & Place Bid Lot 79



80

William Crozier HRHA (1930-2011)

WILLIAM CROZIER LIMITED EDITION BOOK and PRINT

limited ed. book; (1) ; carborundum print; (1); (both no. 48 from an edition of 125)

print signed, numbered and titled in pencil

12 x 10½in. (30.48 x 26.67cm)

Hardbacked book presented in original yellow slipcase. Dimensions of carborundum print, 8.75 by 10.25in.

€400-€600 (£290-£430 approx.)

[Large Image & Place Bid Lot 80](#)



81

Sean Scully (b.1945)

WALLS OF ARAN BY COLM TÓIBÍN AND SEAN SCULLY

limited edition book (of 100); digital chromogenic print; (no. 34 from an edition of 100)

photographic print signed, numbered, titled [Inis Oirr 9] and dated [05]

10 x 10¾in. (25.40 x 27.31cm)

In original red slipcase. From the walls of Aran series. Sheet size of c-print: 8 by 9.75 inches.

€400-€600 (£290-£430 approx.)

[Large Image & Place Bid Lot 81](#)



81A

Helmut Newton (1920-2004)

SUMO, COLOGNE: TASCHEN, FIRST EDITION, 1999

limited edition book; (no. 09923 from an edition of 10,000); metal book stand designed by Philippe Starck; (1)

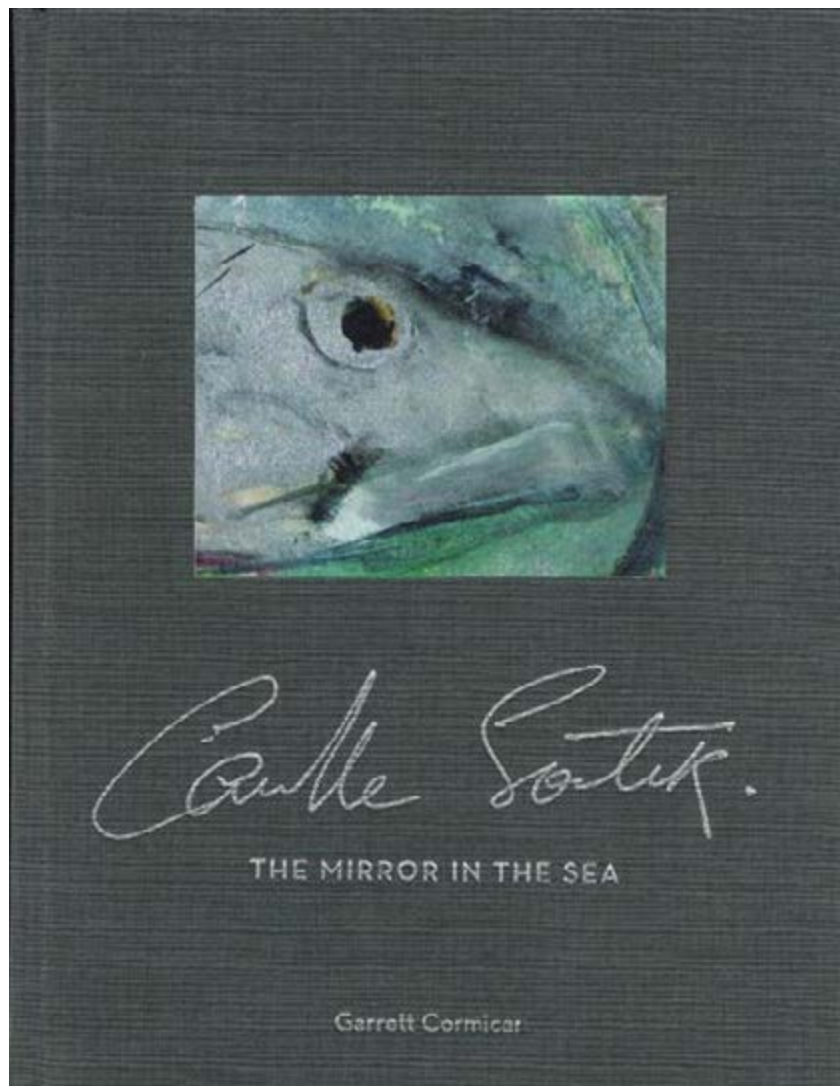
signed and numbered on editions page

28 x 20in. (71.12 x 50.80cm)

Taschen, 1999 signed and numbered limited edition publication of which this is number 09923. Elephant folio presented in a heavy photographic cloth accompanied by a custom metal stand by Philippe Starck. This immense and weighty volume edited by his wife, June, highlights the photographic career of Helmut Newton (1920-2004), best known for his striking photos of fashion, celebrities and nudes.

€2000-€3000 (£1440-£2160 approx.)

[Large Image & Place Bid Lot 81A](#)



82

Camille Souter HRHA (b.1929)

CAMILLE SOUTER: THE MIRROR IN THE SEA by GARRETT CORMICAN

special limited edition book; (no. 71 from a of 150)

numbered and signed by author and artist on editions page rear

13 x 10in. (33.02 x 25.40cm)

Published in Dublin by Whyte's in 2006. First limited edition issued in a special limited edition signed by artist and author of which this is one. Beautifully presented in grey linen boards with decorated upper and titled at spine with matching grey linen slipcase.

€150-€250 (£110-£180 approx.)

Large Image & Place Bid Lot 82



83

Desmond Carrick RHA (1928-2012)

DESMOND CARRICK RHA - THE LIE OF THE LAND and PASTEL OF FIGURES AND TREES (A PAIR)

pastel signed lower right

special limited edition book; (1); oil pastel on paper; (1)

12½ x 10½in. (31¾ x 26.67cm)

Gandon Editions, Cork, 2009. Special hardbacked edition contained in maroon coloured leather and linen board and matching linen presentation slip case. Dimensions of pastel, 11.5 by 16.25in, contained in presentation container. Desmond Carrick was elected a member of the RHA in 1968 and became one of the institution's most eminent and active members. For forty-four years his paintings were a familiar sight on the academy walls, particularly during the annual exhibitions. His role as secretary for the academy in the late 1970s saw his skills as an administrator come to the fore and he played a crucial role in facilitating the transformation of the old academy site into the modern space it is today. He sat on various academy committees and was central to the process of electing new members, as well as the coordination of the annual show, in which he exhibited since 1951. Carrick's journey towards becoming an artist was gradual. He followed in his father's footsteps with a career in the Guinness brewery from 1945 but pursued his interest in art through classes at NCAD where Seán Keating and Maurice MacGonigal (both past presidents of the RHA) were his tutors. He won the coveted Taylor Scholarship in 1956; a prize which facilitated a trip to Spain and ignited a lifelong passion for light and colour. Often in the company of fellow academian James Nolan, he would continue this pursuit in weekend trips around Dublin and to the West of Ireland and later with regular trips to Spain and France. While continuing to work in Guinness (he remained with the brewery until 1977) his talents as an artist were recognised. Bryan Guinness, later Lord Moyne, director of the brewing company, became a patron and he was commissioned to paint a large mural depicting the brewing process for the company's visitor centre in 1958. In the late 1950s Carrick designed and constructed his own home and studio at Killakee. He married Deirdre Mellett in 1967 and together they enjoyed life in the picturesque surroundings of the Dublin Mountains. After his retirement from Guinness, the couple spent part of the year abroad in Southern Spain and in France. Much of the work painted on these sojourns was later submitted for exhibition in the RHA annual show or in various exhibitions with the Dublin Painters Gallery, Ritchie Hendriks Gallery, IELA, Oireachtas among others. In 2009 Gandon Editions published a profusely illustrated text on Carrick's life and career, *The Lie of the Land*. This brought to light his journey and celebrated the diversity of his skills as an artist in oil, watercolour, sculpture and stained glass.

€150-€200 (£110-£140 approx.)

Large Image & Place Bid Lot 83



84

Paul Henry RHA (1876-1958)

UNTITLED, c.1950s

photolithographic print

signed in pencil in the margin lower right; with blind stamp lower left; signed in the plate lower left

13¾ x 15½in. (34.93 x 39.37cm)

€150-€250 (£110-£180 approx.)

[Large Image & Place Bid Lot 84](#)



85

George K. Gillespie RUA (1924-1995)

BLARNEY CASTLE, c.1978

oil on board

signed lower left; with 1978 [Sheldon Fine Art, Belfast] certificate of guarantee, receipt of sale and change [£1 pound note] in envelope affixed on reverse

9½ x 13½in. (24.13 x 34.29cm)

Provenance:

Sheldon Fine Art, Belfast;

Where purchased by a Mr McMullen;

Private collection

€600-€800 (£430-£580 approx.)

[Large Image & Place Bid Lot 85](#)



86

Thomas Ryan PPRHA (b.1929)

ABOVE DUBLIN FROM THE PINE FOREST, NOVEMBER 1968

oil on canvas

signed, dated and partially titled lower right; signed, dated and inscribed with full title on reverse

20 x 25in. (50.80 x 63½cm)

€1000-€1500 (£720-£1080 approx.)

[Large Image & Place Bid Lot 86](#)



87

Frank Egginton RCA (1908-1990)

VIEW OF RIVER MAINE

watercolour

signed lower right

14 x 20in. (35.56 x 50.80cm)

Provenance:

Acquired directly from the artist by the parents of the present owner

The River Maine runs through Castlemaine, Co. Kerry. Son of artist, Wycliffe Egginton, RI (1875-1951), Frank Egginton was born in Cheshire and first visited Ireland in the 1930s. He is synonymous with views in watercolour of the Irish countryside, particularly county Donegal. From the early 1930s many of his works were shown at the RHA, and later, from 1952 at the Victor Waddington Gallery in Dublin. In the UK his works were shown at the Fine Art Society and Royal Institute of Painters in Water Colours, London and the Walker Art Gallery, Liverpool among others. The artist's daughter and son-in-law own 'The Gallery', Dunfanaghy Co. Donegal since 1968.

€400-€600 (£290-£430 approx.)

[Large Image & Place Bid Lot 87](#)



88

Tom Nisbet RHA (1909-2001)

MOUNT STREET, DUBLIN, WITH VIEW OF THE PEPPERCANISTER CHURCH

watercolour

signed lower right

12 x 15½in. (30.48 x 39.37cm)

€400-€600 (£290-£430 approx.)

[Large Image & Place Bid Lot 88](#)



89

Raymond Mintz HRHA (1925-2008)

WINDY GAP, 1981

colour print; (no. 113 from 474)

signed, numbered and titled in pencil in the lower margin; signed and dated in the plate lower right; with inscribed artist's label on reverse

16½ x 20½in. (41.91 x 52.07cm)

Provenance:

Bín Bán Gallery, Kerry;

Private corporate collection,

Dublin; Whyte's, 9 December 2012, lot 52;

Whence purchased by the present owner

€80-€100 (£60-£70 approx.)

[Large Image & Place Bid Lot 89](#)



90

Norman J. McCaig (1929-2001)

ON THE BEACH, DUNFANAGHY, DONEGAL

oil on canvas board

signed lower left; titled on reverse

12 x 12in. (30.48 x 30.48cm)

€800-€1200 (£580-£860 approx.)

[Large Image & Place Bid Lot 90](#)



91

Norman J. McCaig (1929-2001)

LOBSTER BOATS, CUSHENDUN, COUNTY ANTRIM

oil on canvas board

signed lower right; titled on reverse

12 x 16in. (30.48 x 40.64cm)

€800-€1200 (£580-£860 approx.)

[Large Image & Place Bid Lot 91](#)



92

Norman J. McCaig (1929-2001)

EVENING, ROUNDSTONE, CONNEMARA, 1984

oil on canvas

signed lower left; titled and dated on artist's studio label on reverse

12 x 16in. (30.48 x 40.64cm)

Provenance:

Adam's, 1 April 2009, lot 44;

Private collection

€600-€800 (£430-£580 approx.)

[Large Image & Place Bid Lot 92](#)



93

Norman J. McCaig (1929-2001)

SUNNY DAY, COPELAND ISLANDS

oil on board

signed lower left; inscribed on label on reverse

17 x 23in. (43.18 x 58.42cm)

€1000-€1500 (£720-£1080 approx.)

[Large Image & Place Bid Lot 93](#)



94

Norman Teeling (b.1944)

VENICE

oil on board

signed lower right

23½ x 19¼in. (59.69 x 48.90cm)

€800-€1200 (£580-£860 approx.)

[Large Image & Place Bid Lot 94](#)



95

Norman Teeling (b.1944)

BULL ISLAND AND RINGSEND VIEW

oil on board

signed lower right

9¾ x 11¾in. (24.77 x 29.85cm)

€400-€600 (£290-£430 approx.)

[Large Image & Place Bid Lot 95](#)



96

Tom Cullen (1934-2001)

DUBLIN STREET SCENE, 1979

oil on canvas

signed and dated lower left

9 x 5¼in. (22.86 x 13.34cm)

€150-€200 (£110-£140 approx.)

[Large Image & Place Bid Lot 96](#)



97

John Skelton (1923-2009)

EARLY MORNING BATHER, BLESSINGTON, 1985

watercolour

signed and dated right of centre; signed, titled and dated on reverse

16 x 12in. (40.64 x 30.48cm)

€300-€500 (£220-£360 approx.)

[Large Image & Place Bid Lot 97](#)



98

Sir William Russell Flint RA PRWS RWS (1880-1969)

THE SHOWER, 1961

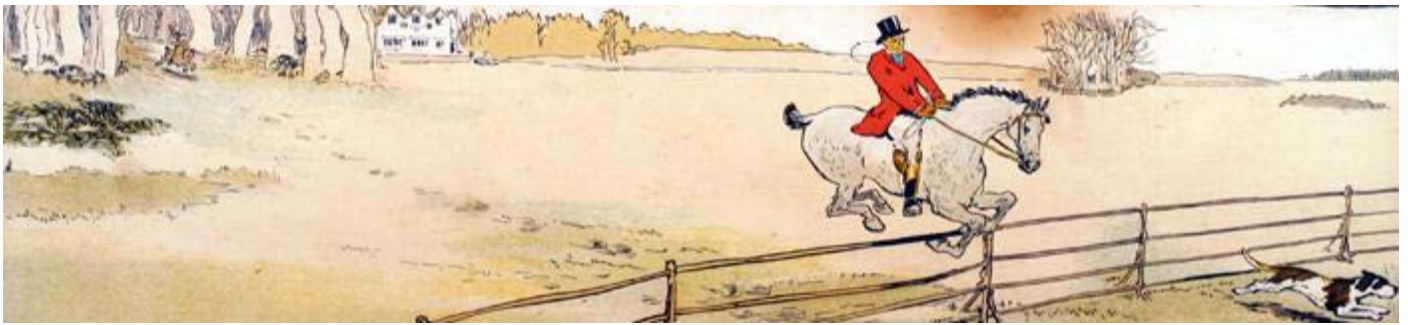
photolithographic print

signed in pencil in the margin lower right; with blind stamp lower left; signed in the plate lower right; with Combridge's label on reverse

16½ x 22in. (41.91 x 55.88cm)

€150-€250 (£110-£180 approx.)

[Large Image & Place Bid Lot 98](#)



99

Jack Butler Yeats RHA (1871-1957)

STONE WALLS DO NOT A PRISON MAKE and NOR IRON BARS A CAGE, 1897 (A PAIR)

lithographs printed in colour; (2)

signed in the plate lower right and lower left respectively; titled on lower margins

6 x 23½in. (15.24 x 59.69cm)

These were part of a poster advertising Yeats' first solo show of watercolours at the Clifford Gallery, London, in 1897. Both images are scarce.

€400-€600 (£290-£430 approx.)

[Large Image & Place Bid Lot 99](#)



100

Gerald Hastings Wakeman (b. circa 1864)

THE NOSE OF HOWTH, 1909 and ANOTHER HOWTH SCENE

watercolour; (2)

each signed lower left; the first with title and date [29/5/09 4pm] re-written on backing board

9 x 5½in. (22.86 x 13.97cm)

Wakeman is listed on the 1901 and 1910 census with addresses in Clonturk, Drumcondra Rural" and later 8 David Road, Whitworth Road, Drumcondra. He exhibited widely from the David Road address from 1904 with the Watercolour Society of Ireland and Oireachtas (1907 and 1911). Landscapes in County Dublin dominate but other areas exhibited included Belfast, Portrush, Southampton, Putney Heath and Hampshire. The 1901 census records his occupation as "Draughtsman in the Registration of Titles Office, Chancery Division, High Court of Justice Ireland" aged 34 years. He lived at this juncture with his aunt Louisa Alethea Perrin, 70 years."

€300-€500 (£220-£360 approx.)

[Large Image & Place Bid Lot 100](#)



101

William Alfred Gibson (Scottish, 1866-1931)

OUTSKIRTS OF PARIS

oil on panel

signed lower left; titled on remnants of a label on reverse

11½ x 17in. (29.21 x 43.18cm)

€1400-€1600 (£1010-£1150 approx.)

[Large Image & Place Bid Lot 101](#)



102

Charles Frederick Buckley (1812-1869)

ANGLERS BY THE ROCKS

watercolour

signed lower right

8½ x 8½in. (21.59 x 21.59cm)

Charles Frederick Buckley, a native of Cork, relocated to London c.1840. He specialised in landscape and figure painting in oil and watercolour painting subjects in Ireland and throughout the UK. He exhibited regularly at the Suffolk Street Galleries of the Royal Society of British Artists from 1841-1869 from an address at 45 Great Russell Street. Examples of his works can be found in the Victoria and Albert Museum, among others.

€100-€150 (£70-£110 approx.)

[Large Image & Place Bid Lot 102](#)



103

Henry Albert Hartland RWS (1840-1893)

LANDSCAPE WITH COTTAGE AND TURF STACKS

watercolour with gouache

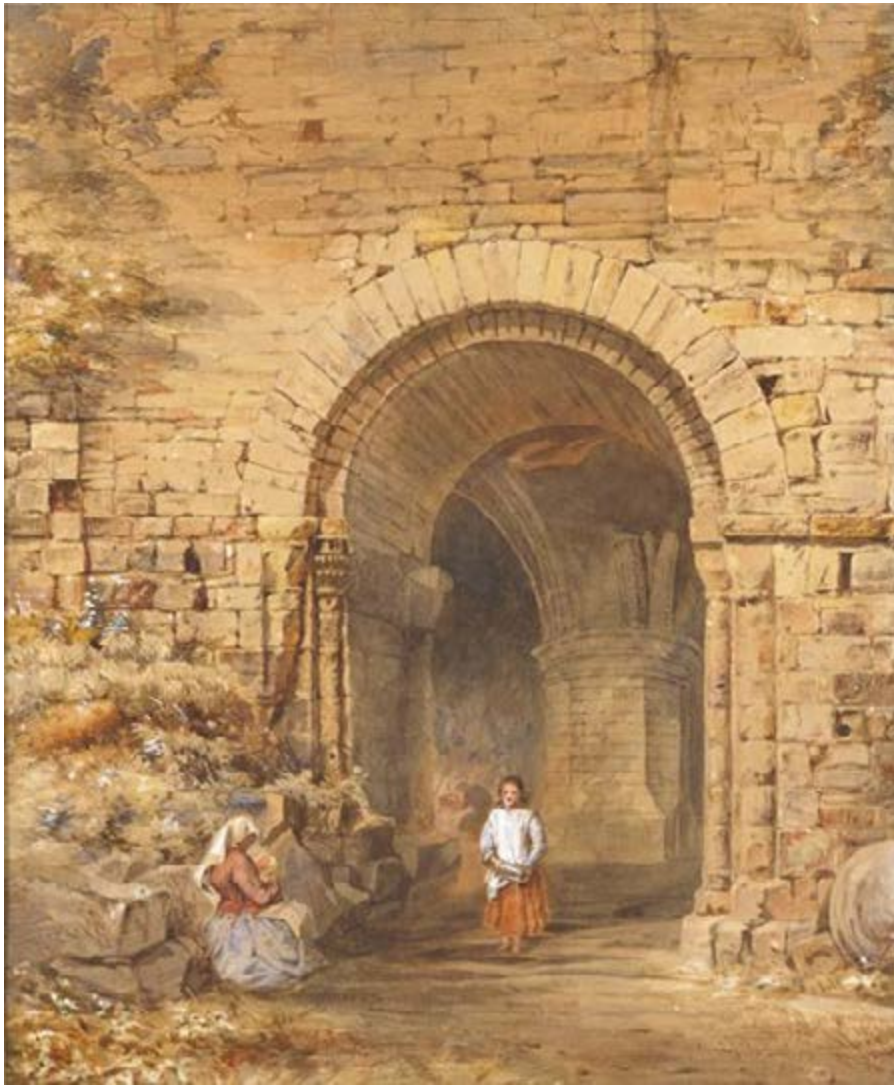
signed lower right

16¼ x 29in. (41.28 x 73.66cm)

Born at Bellvue, Mallow, into a prominent Cork family of nurserymen (his brother William Baylor Hartland in particular was well-known among Cork business circles), Henry Albert Hartland studied at the Cork School of Art. He found employment supplying sketches of the local landscape to a Cork bookseller, and printing scenery for the Cork Theatre and the Theatre Royal in Dublin. He left Ireland circa 1870, settling at first in London and shortly afterwards in Liverpool, where he spent the rest of his life. His talents there were soon recognised and he sold paintings almost as fast as he painted them. He made return trips to Ireland, painting in Mayo, Clare, and along the River Shannon. In 1865 he sent five landscapes to the RHA and was an occasional contributor afterwards. He also exhibited in London with the Society of Artists, the Grosvenor Gallery, the New Watercolour Society, and the RA. He died in 1893 after falling from a cliff outside of Liverpool. His work was included in the Guildhall Exhibition of Irish Art in London in 1904, and may now be seen in the Walker Gallery, Liverpool, and the Victoria and Albert Museum, London.

€200-€300 (£140-£220 approx.)

[Large Image & Place Bid Lot 103](#)



104

JK Bradford (fl. 1857)

FIGURES IN AN ARCHWAY, 1857

watercolour

signed and dated lower right

20 x 17in. (50.80 x 43.18cm)

€300-€500 (£220-£360 approx.)

[Large Image & Place Bid Lot 104](#)



105

William Bingham McGuinness RHA (1849-1928)

CONTINENTAL RIVER SCENE, 1886

watercolour

signed and dated lower left

16¾ x 22in. (42.55 x 55.88cm)

€800-€1200 (£580-£860 approx.)

[Large Image & Place Bid Lot 105](#)



106

William Bingham McGuinness RHA (1849-1928)

STREET SCENE WITH FIGURES, 1887

watercolour

signed and dated lower left; inscribed on label on reverse

13¼ x 9¼in. (33.66 x 23½cm)

€500-€700 (£360-£500 approx.)

[Large Image & Place Bid Lot 106](#)



107

William Bingham McGuinness RHA (1849-1928)

COTTAGES BY A BOG

watercolour

signed lower left

9¾ x 13¾in. (24.77 x 34.93cm)

€300-€400 (£220-£290 approx.)

[Large Image & Place Bid Lot 107](#)



108

William Bingham McGuinness RHA (1849-1928)

LOOKING TOWARDS KILLARNEY FROM THE KENMARE ROAD

watercolour

signed lower left; inscribed on reverse

7½ x 13¾in. (19.05 x 34.93cm)

€300-€400 (£220-£290 approx.)

[Large Image & Place Bid Lot 108](#)



109

John Claude Bosanquet (fl.1870's)

LOWER LAKE, KILLARNEY, 1872

watercolour

signed and dated on reverse

9 x 14in. (22.86 x 35.56cm)

€150-€200 (£110-£140 approx.)

[Large Image & Place Bid Lot 109](#)



110

Attributed to Samuel Frederick Brocas (c.1792-1847)

LANDSCAPE WITH RIVER, BUILDINGS AND MOUNTAINS IN THE DISTANCE

watercolour and gouache heightened with white

bears 'S. Brocas' in the mount

10¼ x 14½in. (26.04 x 36.83cm)

€200-€300 (£140-£220 approx.)

[Large Image & Place Bid Lot 110](#)



111

Padraig Lynch (b.1936)

GALWAY HOOKERS

oil on board

signed lower right; titled on reverse; also with Oriel Gallery label on reverse

12 x 15in. (30.48 x 38.10cm)

Provenance:

Oriel Gallery, Dublin;

Private collection

€600-€800 (£430-£580 approx.)

[Large Image & Place Bid Lot 111](#)



112

John H. Russell (fl. 1875-1922)

WINTER, THE END OF THE EAST PIER, KINGSTOWN, 1875

oil on board

signed and dated lower left; inscribed on reverse beneath backing board with title and artist's address [Greenfield, Kingstown]

7 x 10½in. (17.78 x 26.67cm)

Exhibited:

Probably exhibited at the Dublin Sketching Club 1876, catalogue no. 189 as Kingstown¹⁰⁰

Little is known about the early career of this artist, other than that he resided at Kingstown (now Dun Laoghaire) in the year this work was painted.

€800-€1000 (£580-£720 approx.)

[Large Image & Place Bid Lot 112](#)



113

Attributed to Thomas Walmsley (1763-1806)

FIGURES BY A LAKE NEAR CASTLE RUINS

watercolour and gouache on paper

15 x 20in. (38.10 x 50.80cm)

Provenance:

Collection of John Heard Esq, Hertford, by 1905; Thence to his wife, Lena Gertrude Heard, in 1954;

By whom bequeathed to the previous owner (full details on reverse)

€400-€600 (£290-£430 approx.)

[Large Image & Place Bid Lot 113](#)



114

William Robinson (1835-1895)

FIGURE ON A COUNTRY ROAD, 1885

watercolour

signed and dated lower left

14½ x 10½in. (36.83 x 26.67cm)

€300-€400 (£220-£290 approx.)

[Large Image & Place Bid Lot 114](#)



115

James Malton (1761-1803)

LEINSTER HOUSE

hand coloured print

10¼ x 15in. (26.04 x 38.10cm)

€200-€400 (£140-£290 approx.)

[Large Image & Place Bid Lot 115](#)



116

E. Davis

FISHING BOATS AT RAMSGATE, KENT

oil on canvas

signed lower left

29½ x 49½in. (74.93 x 125.73cm)

€500-€700 (£360-£500 approx.)

[Large Image & Place Bid Lot 116](#)



117

Thomas Markey (1885-1967)

MILLMOUNT, DROGHEDA

oil on canvas

27½ x 43in. (69.85 x 109.22cm)

€200-€300 (£140-£220 approx.)

[Large Image & Place Bid Lot 117](#)



118

Joseph William Carey RUA (1859-1937)

ROYAL HOTEL, BELFAST, 1917

watercolour

signed and dated lower right

8½ x 14in. (21.59 x 35.56cm)

Provenance:

F. G. Davis & Sons, Belfast;

Private collection

€500-€700 (£360-£500 approx.)

[Large Image & Place Bid Lot 118](#)



119

20th Century English School

TWO HORSES

oil on canvas

with red seal stamp lower right

30 x 18in. (76.20 x 45.72cm)

Provenance:

Whyte's, 13 December 2010, lot 164;

Private collection

€500-€700 (£360-£500 approx.)

[Large Image & Place Bid Lot 119](#)



120

17th century Continental School

PORTRAIT OF A GENTLEMAN

oil on canvas

10 x 8in. (25.40 x 20.32cm)

Thought to be Swedish origin and once in the collection of a Bishop of Killala, Co Mayo.

€300-€500 (£220-£360 approx.)

[Large Image & Place Bid Lot 120](#)



121

Karuz Gruber (Venezuelan, 20th/21st Century)

SAN NICOLÁS, ICON

mixed media on wood

with artist's name, title and medium on typed label on reverse

11 x 7in. (27.94 x 17.78cm)

Gruber is a contemporary Caracas based artist. She studied iconography in Sofia, Bulgaria.

€200-€300 (£140-£220 approx.)

[Large Image & Place Bid Lot 121](#)



122

Leo Broe (1899-1966)

POPE JOHN XXII

pencil

signed lower right; with original framer's label on reverse

8¾ x 7¼in. (22.23 x 18.42cm)

Provenance:

Whyte's, 26 May 2007, lot 262;

Private collection

Leo Broe, named after Pope Leo XIII (1810-1903) was a Dublin-born sculptor and founder of the firm Leo Broe and Sons, ecclesiastical stone carvers.

€200-€300 (£140-£220 approx.)

[Large Image & Place Bid Lot 122](#)



123

Bog oak sculpture

A sculpture composed of sections of semi-fossilised roots.

7 x 12 x 10in. (17.78 x 30.48 x

€150-€200 (£110-£140 approx.)

[Large Image & Place Bid Lot 123](#)



124

A George III brass-bound mahogany navette-shaped oyster bucket

of coppered construction, with brass swing handle and brass liner.

13½ x 13 x 10½in. (34.29 x 33.02

€600-€800 (£430-£580 approx.)

[Large Image & Place Bid Lot 124](#)



125

A Victorian silver fiddle and thread pattern basting spoon

London, 1865, 5oz troy.

€100-€150 (£70-£110 approx.)

[Large Image & Place Bid Lot 125](#)



126

Two Victorian silver card cases

Birmingham, 1857 and 1858; together with a lady's American white metal cigarette case with gilt interior. (3) Total weight 228g, 7oz troy.

€80-€100 (£60-£70 approx.)

[Large Image & Place Bid Lot 126](#)



127

A late 19th century American silver bowl

the sides repoussé decorated with repeating foliate scroll. Stamped with makers mark and 'Sterling - 3937A - Pat.1892' to base. 282g, 9oz troy.

1½ x 7in. (3.81 x 17.78cm)

€150-€200 (£110-£140 approx.)

[Large Image & Place Bid Lot 127](#)



128

A Continental silver serving slice and a Continental silver bon-bon dish

the slice with foliate pierced and engraved blade, 11.5 long, 90g, 3oz troy; the bowl with pierced scrolling foliate sides around base relief decorated with women harvesting wheat. 6.5" wide, 107g, 3oz troy."

€80-€100 (£60-£70 approx.)

[Large Image & Place Bid Lot 128](#)



129

1973. Eamon de Valera commemorative silver plate.

Hallmarked EEC commemorative Irish Assay Office silver by Royal Irish Ltd, limited to an edition of 2500 of which this is 1074. Large Eamon de Valera Uachtarán na hÉireann (President of Ireland) 1959-1973 commemorative silver plate produced on the occasion of his leaving the office of President. Decorated with an engraved portrait of de Valera by Jack Coughlin. Complete with presentation box of issue and accompanying booklets. (550g approx.)

11 x 11in. (27.94 x 27.94cm)

€200-€300 (£140-£220 approx.)

[Large Image & Place Bid Lot 129](#)



130

1974: Churchill Centenary Trust commemorative silver plate

A sterling silver with gilt commemorative plate numberd 1409. Issued by The Churchill Centenary Trust. Hallmark 1974. Complete with certificate, booklet of issue and custom made fitted display case. 320g.

8 x 8in. (20.32 x 20.32cm)

€100-€150 (£70-£110 approx.)

[Large Image & Place Bid Lot 130](#)



131

19th Century: William of Orange Staffordshire commemorative wall plaque

A 19th Century Staffordshire pottery pictorial wall plaque decorated with an image of William of Orange on horseback above the words No Surrender. Also with an early framed colour lithograph Orange Order display piece with symbolism and imagery of William III."

€150-€200 (£110-£140 approx.)

[Large Image & Place Bid Lot 131](#)



132

circa 1900: Doulton Lambeth 5th Royal Irish Lancers jug

5th Royal Irish Lancers souvenir jug impressed with Doulton Lambeth marks and stamped OP3121 (Ellen Palmer)

€100-€150 (£70-£110 approx.)

[Large Image & Place Bid Lot 132](#)



133

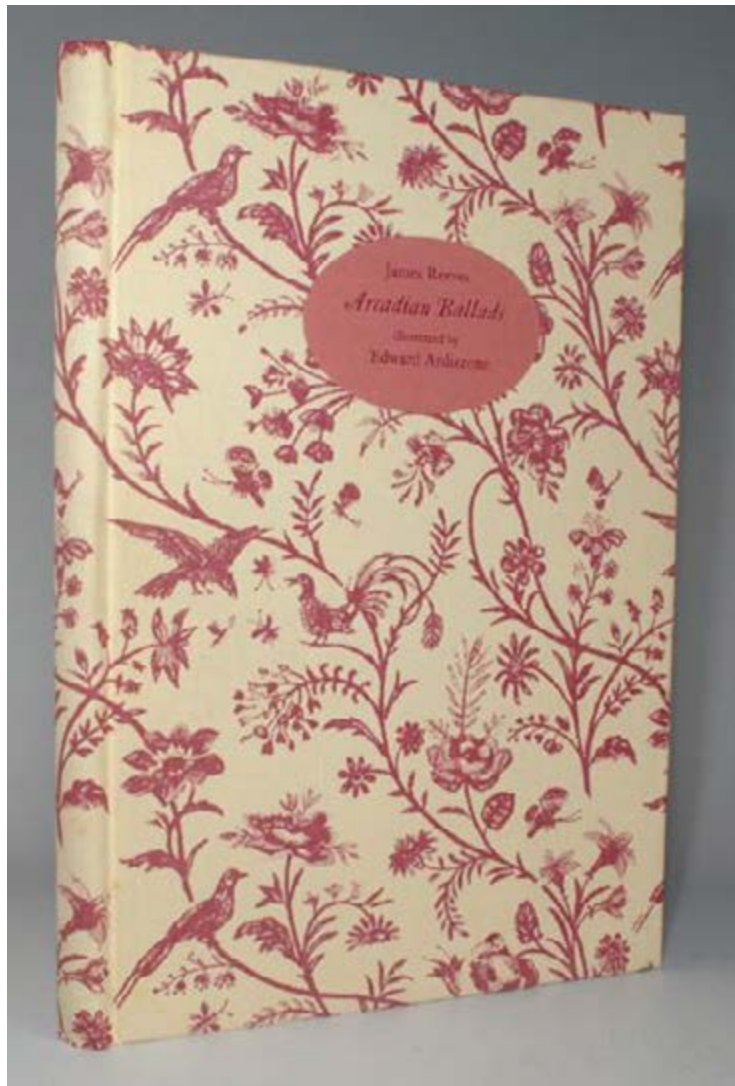
circa 1900: Apprentice violin model

With case and bow. Case with label *La Premier de l'apprent Martin Cullier de la Royale Vienna Atelier, Paris*'''

12 x 4in. (30.48 x 10.16cm)

€150-€250 (£110-£180 approx.)

[Large Image & Place Bid Lot 133](#)



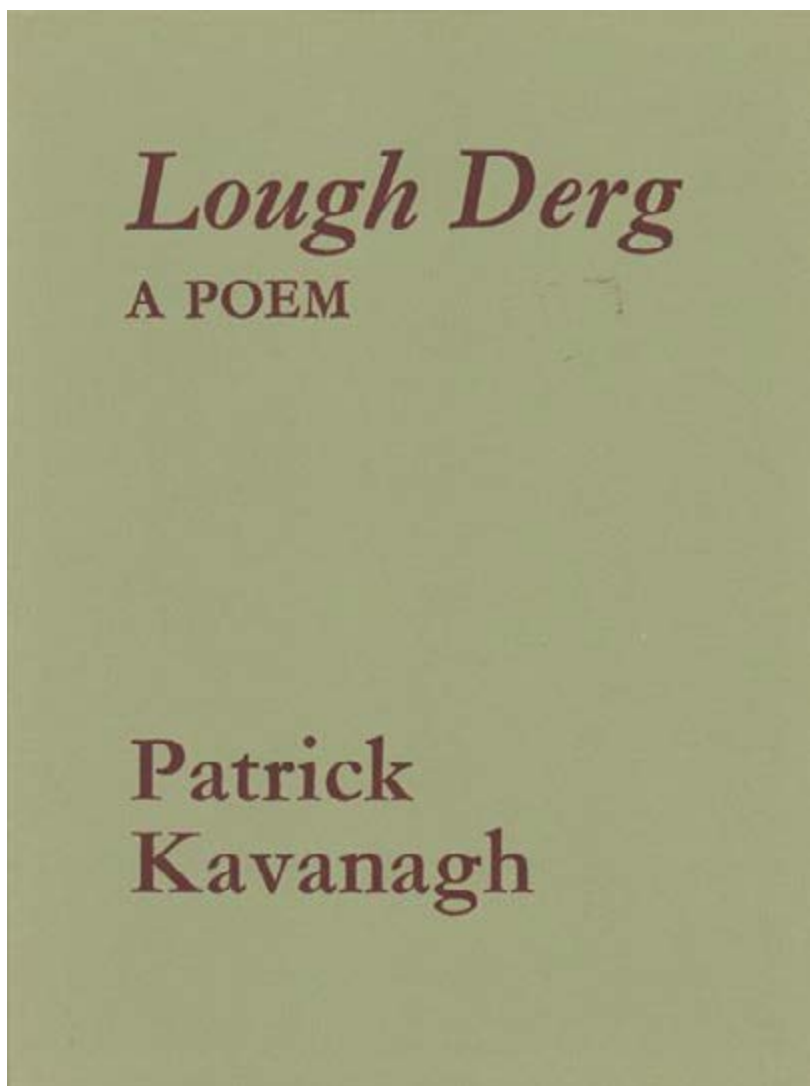
134

Reeves, James. Arcadian Ballads, signed limited edition

Whittington Press 1977. Limited to an edition of 250 of which this is 196. Original boards with slipcase. Illustrations by Edward Ardizzone. Signed by both the artist and author.

€80-€120 (£60-£90 approx.)

[Large Image & Place Bid Lot 134](#)



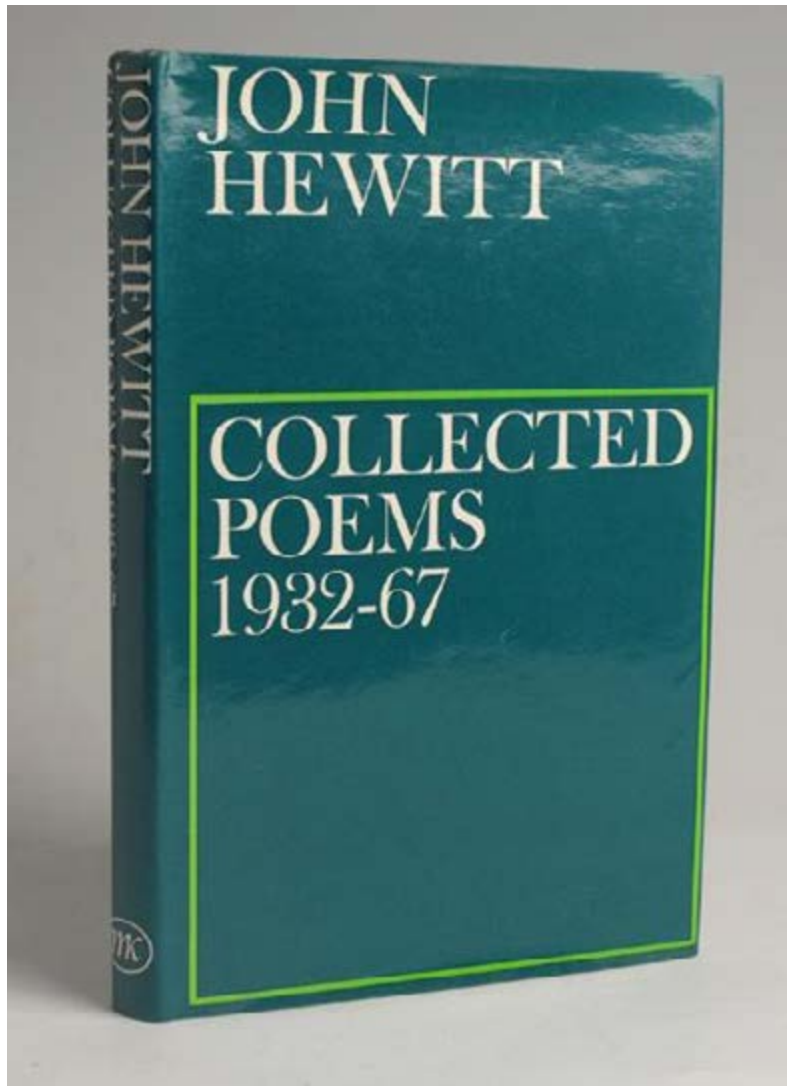
135

Kavanagh, Patrick. *Lough Derg A Poem and others*

Martin, Brian and O'Keeffe, London, 1978. Original cloth with wrappers. Also with *Come Dance with Kitty Stobling and other poems*, Longmans London, 1960 and *The Green Fool*, Martin, Brian and O'Keeffe, London 1971. (3 items)

€200-€300 (£140-£220 approx.)

[Large Image & Place Bid Lot 135](#)



136

Hewitt, John. Collection of signed books and publications

Collected Poems 1932-1967, MacGibbon & Kee, London 1968. No Rebel Word, Frederick Muller Ltd. London, 1948. The Day of the Corncrake: Poems of the Nine Glens, Glens of Antrim Historical Society, 1969. Those Swans Remember, privately published Belfast 1969. Prologue for An Evening at Whitefriars, 1970. The Lint Pulling, Ulster Young Farmer 1948. An Ulster Reckoning, privately published 1971. Coventry The Tradition of Change and Continuity, Coventry Corporation, 1966. Poems by John Hewitt, reprinted from The Massachusetts Review, Vol. 5 No. 2 Winter 1964. All of the aforementioned signed by Hewitt. Also with unsigned copies of Mosaic, Blackstaff Press 1981, Kites in Spring, Blackstaff Press, 1980, The Rain Dance, Blackstaff Press, 1978, Out Of My Time, Blackstaff Press, 1974, Ancestral Voices, Blackstaff Press, 1987. (14 items)

€300-€500 (£220-£360 approx.)

[Large Image & Place Bid Lot 136](#)



137

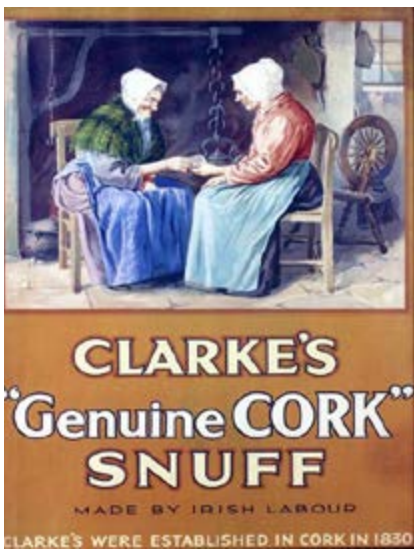
Goodness! Guinness! poster

1958. Designed by R. Peppe, "Goodness! Guinness!" above a head and shoulders of a man lifting his trilby to reveal a glass of Guinness, original four-sheet-sized poster, GA/P4U/2562, printed by Mills & Rockley. Linen backed, total size"

65 x 46in. (165.10 x 116.84cm)

€250-€350 (£180-£250 approx.)

[Large Image & Place Bid Lot 137](#)



138

Posters: "Hand in Hand Irish Whisky", "Player & Sons Dublin" and "Clarke's Cork Snuff"

Coloured reproductions, attractively framed. The Whisky" poster for Alderdice in Newry."

19 x 15in. (48.26 x 38.10cm)

€100-€150 (£70-£110 approx.)

[Large Image & Place Bid Lot 138](#)



139

1950s Mettoy 'Giant' clockwork tin plate racing car

A clockwork open top racer with tapering, red bodywork with yellow litho detailing, No. 7 in black and yellow on white, metal radiator and operative steering wheel, litho metal wheels in grey and black. Driver in white with blue helmet.

5½ x 15in. (13.97 x 38.10cm)

€150-€200 (£110-£140 approx.)

[Large Image & Place Bid Lot 139](#)



140

Toy Cars, JBP

Two tinplate toy racing cars with licence plate JBP 501. Unboxed.

€20-€30 (£10-£20 approx.)

[Large Image & Place Bid Lot 140](#)



141

Matchbox, Models of Yesteryear

Seven boxed Matchbox, Models of Yesteryear toy cars, mainly 'beer lorries'. Includes Stanley Gibbons model van, also boxed. (8)

€40-€60 (£30-£40 approx.)

[Large Image & Place Bid Lot 141](#)



142

Corgi, Chipperfield Circus vehicle

Number 1123, Chipperfield's Circus Animal Cage with a pair of polar bears. Boxed.

€30-€40 (£20-£30 approx.)

[Large Image & Place Bid Lot 142](#)



143

Matchbox Super Kings

Collection of seven Matchbox Super Kings and Speed Kings toy cars. Boxed.

€40-€60 (£30-£40 approx.)

[Large Image & Place Bid Lot 143](#)



www.whytes.ie 01 676 2888 info@whytes.ie

8 DECEMBER 2015 – ART & COLLECTIBLES

INDEX OF ARTISTS REPRESENTED IN THIS AUCTION

Armstrong, Arthur: 20, 21	Egginton, Frank: 87	Mulcahy, Michael: 51, 54, 61
Baker, Adge: 24	FitzGerald, Peter: 45	Newton, Helmut: 81A
Ballagh, Robert: 40, 43, 43A, 44	Fitzharris, Mike: 50	Nisbet, Tom: 88
Bosanquet, John Claude: 109	Forty, Frank: 65	O'Sullivan, Seán: 13A
Bradford, JK: 104	Geary, Kevin: 42, 47, 53A, 56, 68, 73	O'Connor, Joseph: 53
Brennan, Cecily: 38	Gibson, William Alfred: 101	O'Kane, Eamon: 55
Brocas, Attributed to Samuel	Gillespie, George K: 85	Reynolds, Bernard: 62
Frederick: 110	Gruber, Karuz: 121	Robinson, Markey: 74, 75
Broe, Leo: 122	Hartland, Henry Albert: 103	Robinson, William: 114
Brophy, Elizabeth: 60, 63, 66	Hayes, Ernest Columba: 13	Rodgers, Patsy Dan: 71
Buckley, Charles Frederick: 102	Henry, Paul: 84	Russell Flint, Sir William: 98
Byrne, Gerard: 58	Hoad, Jeremiah: 17	Russell, John H: 112
Carey, Joseph William: 118	Hurley, Niamh: 46	Ryan, Thomas: 86
Carrick, Desmond: 83	Hutson, Marshall C: 16	Schwatschke, John: 69, 70
Christie, Betty: 57	Irish School: 77, 78	Scott, Patrick: 25-35
Clear, Ciarán: 14	King, Cecil: 36, 37	Scully, Sean: 81
Collis, Peter: 72	King-Harman, Anne: 23	Skelton, John: 97
Comerford, Elizabeth: 59	Knuttel, Graham: 76	Souter, Camille: 82
Continental School, 17th century: 120	Lamb, Matt: 52	Stanley, Jacqueline: 49
Costelloe, Eileen: 22	Leonard, Patrick: 12	Sutton, Ivan: 41
Crozier, William: 80	Lynch, Pdraig: 111	Taylor, Anne: 19
Cullen, Michael: 48, 51A, 52A	Malton, James: 115	Teeling, Norman: 94, 95
Cullen, Tom: 96	Markey, Thomas: 117	Tobin, Maighread: 79
Davis, E: 116	Mason, William: 18	Wakeman, Gerald Hastings: 100
Dinan, John: 64	McCaig, Norman J: 90-93	Walker, Hazel: 39
	McGuinness, Norah: 1-10	Walmsley, Attributed to Thomas: 113
	McGuinness, William	Watkins, Deborah: 67
	Bingham: 105-108	Yeats, Jack Butler: 99
	Mintz, Raymond: 89	Yeats, John Butler: 15
	Mitchell, Helen Lillias: 11	

TOPOGRAPHICAL AND GENERAL INDEX

Antrim: 57, 91	Dublin County: 13, 58, 86, 95, 100	Photography: 81, 81A
Belfast: 118	England: 116	Posters: 137, 138,
Belgium:	Equestrian: 119	Silver: 125-130
Books: 81-83, 134-136,	France: 101	Sligo: 15
Cook Islands:	Galway: 67, 92, 111	South Africa: 40,
Cork: 14, 49, 85, 102, 103	Italy: 94, 122	Toys: 77, 139-142
Donegal: 1, 2, 22, 71, 90	Kerry: 16, 69, 87, 89, 108	USA: 127
Down: 93	Louth: 117	Venezuela: 121
Dublin City: 3-7, 11, 88, 95, 96, 115	Maritime: 41,	Wicklow: 66, 97
	Military: 132	



Lot 26 Patrick Scott HRHA (1921 - 2014) Christmas Card 1977

WHYTE'S
SINCE 1783

38 Molesworth Street Dublin D02 KF80 01 676 2888 www.whytes.com